

INTRODUCTION

Kunal Aluminium company is sister concern of Kunal Agencies, Chandigarh. Kunal Agencies was established in 1983 at Chandigarh, Kunal Agencies is distributor and wholesaler of Aluminium Profile & Sections and Hardware goods from past 20 Years.

The Kunal Aluminium Company offers a wide range of aluminium profile sections plus all the connecting elements and accessories the designer could need. These modular components allow an almost infinite possibility of frames to be constructed for use in industrial machinery, guarding, storage and display applications.

Profile machining and frame construction to customer's drawings is carried out by KAC on very fast delivery times. Alternatively, specific cut and random lengths can be supplied to customers wishing to construct their own system. Frame design and specification is aided by the use of the MCS CAD files, available in .DWG and .DXF formats.

Aluminium profiles are manufactured from Al6063 to very close tolerances, and clear coat anodised to a depth of 10 microns, ensuring that frames are both accurate and resistant to scratching or corrosion. All manufacture is covered by full ISO 9001 certification. The MCS System is particularly effective at replacing traditional welded steel structures at lower overall cost due to the massive time saving involved. Flexibility is increased compared to welded structures, since all elements are re-usable and additions can easily be made to existing designs at any time. Many of the brackets and connecting elements in the MCS System can be used with no machining involved, for maximum simplicity

QUALITY CONTROL

Quality is our hall mark and hence we attach great importance to this aspect of our products. Every section is subjected to rigid quality control at various stages of production to confirm that all critical dimensional tolerances are kept. If special tolerances are specified extra care is taken to see that each piece of the extruded section conforms in all respects to the specifications given. To carry out quality control, we have the latest imported equipments. We at our end is committed to produce flawless products and providing products and services to customers, meeting and exceeding their expectations. We endeavour to meet this commitment by continuous improvement in the quality of products and services through individual and team efforts.

Research & development

KAC having fully equipped arrangements with most advanced technology to design new dies as per the requirement of buyers and has complete facilities for both destructive testing and chemical/ metallurgical analysis.

GENERAL INFORMATION

ABOUT THE METAL

Aluminium is the most versatile metal. Unique combination of properties makes it one of the most important engineering the construction material. No body can deny it as metal of future & its increasing demand in industry and in common use in assess of modern world. Correctly said "use aluminium the eco-friendly metal of 20th century". Aluminium is light in weight and having high ratio of strength to weight is nontoxic good conductor of electricity, heat, has high reflectivity and can ready be worked into any form and shape. Two prospect of excellent physical and mechanical properties of aluminium extruded sections with infinite range of shapes, durability and cost saving realized due to simplification of components has accelerated the popularity of aluminium extrusions in triggering its use in various day to day utility applications.

TOLERANCES

All sections are supplied in aluminium alloys confirming to the specifications and conditions laid down in i.s. 733, 1285, 5082 and other relevant specifications. Apart from the sections covered in the catalogue, new dies are being continuously developed and added regularly. KAC is also ready to assist in the designing, developing and manufacturing of new shapes required by the buyers. If any profile required by a customer is not included in the catalogue, he just needs to contact with fully dimensioned drawings/sketches giving tolerances, alloys, temper, end use and expected offtake.

KAC can produce shapes in over 10 alloys for applications like refrigerator tubing, knitting needles, architectural bus/truck bodies, irrigation tubes, space, defence, aviation and many more.

KAC architectural shapes are normally supplied in is: 63400 wp/aa:6063 t6/bs:he9 wp alloy and temper. For some builders' hardware shapes, supplies can be made in is: 64430 wp/aa: 6351 t6/bs: he 30 wp and is: 65032 wp/aa : 6251 t6/bs:he20 wp. Alloy and temper are as per specifications given in the relevant bureau of indian/ international standards.

TOLERANCES

Dimensional tolerances on cross section, twist, straightness, length etc. Generally conform to the relevant indian standard is 3695 (for solid sections), is 2673, 1285 (for round tubes), is 6477 & is 1285 (for hollow sections) and as per international recognized standards, unless mutually agreed upon. Suppliers are normally on the basis of variations within the permissible limit of is specifications on the ordered quantity. Dimensions and weights given in the catalogue are nominal. Details of dimensions and tolerances are available in section drawing which can be given on request. Kg/meter shown against sections are approximate and can differ within the is specified variation/ tolerance limits in actual supplies.

CHEMICAL COMPOSITION OF WROUGHT ALUMINIUM AND ALUMINIUM ALLOYS

New	Old	Aluminium	Copper	Magnesium	Silicon	Iron	Magnese	Zinc	TL and/or other grain refining elements.	Chronium	Remarks
19000	ECl	99.0 Min	0.1	-	0.5	0.6	0.1	-	-	-	Ti+V=0.07 Total impurties=1.00
19500	EIB EIE	99.5 Min	0.05	-	0.3	0.4	0.05	-	-	-	Ti+V=0.07 Total impurties=0.50
24345	HE 15	Reminder	3.8 - 5.0	0.2 - 0.8	0.5 - 1.2	0.7	0.3 - 1.2	0.2	*0.3	*0.3	
31000	NE3	Reminder	0.1	0.1	0.6	0.7	0.8 - 1.5	0.2	0.2	0.2	
52000	NE4	Reminder	0.1	1.7 - 2.6	0.6	0.5	0.5	0.2	0.2	0.25	Cr+Mr=0.5
53000	NE 5	Reminder	0.1	2.8 - 4.0	0.6	0.5	0.5	0.2	0.2	0.25	Cr+Mr=0.5
55000	NE 6	Reminder	0.1	4.5 - 5.5	0.6	0.7	1	0.2	0.2	0.25	
63400	HE 9	Reminder	0.1	0.4 - 0.9	0.3 - 0.7	0.6	0.3	0.2	0.2	0.1	
63401	E91E	Reminder	0.05	0.4-0.9	0.3 - 0.7	0.5	-	-	-	-	
64430	HE30	Reminder	0.1	0.4 - 1.2	0.6 - 1.3	0.6 1.0	0.4 - 1.0	0.2	0.25		
65232	HE20	Reminder	0.15-0.4	0.7 - 1.2	0.4 - 0.8	0.7	0.2 - 0.8	0.2	0.2	0.15 - 0.35	Either Min or Cr shall be present

Note:

- * Titanium and/or other grain refining elements and/or chromium may be present at the option of the supplier provided the total content does not exceed 0.3 percent.
- Composition limits are in percent maximum unless shown otherwise.

ALUMINIUM ALLOY SPECIFICATION & SELECTION

ALLOY IS Specification OLD NEW		Condition	0.2% Proof Stress	Ultimate tensile strength kgf/mm ² minimum	Elongat % on 50 mm min	Typical Brinell Hardness	Typical Application & properties
EIB	19500	M	-	6.5	23	18	Used in electrical conductors, bus bars, rectangular and tabular connectors and high electrical conductivity applications.
EIC	19000	M	-	6.5	20	20	Used where formability is a major requirement and strength and stiffness are not . Used in chemical processing equipments, refrigeration and accessories for electrical conductors.
E91E	63401	WP	16.5	20.5	7	-	Good for high strength, electrical bus bars, fittings conductors etc.
NE-3	31000	M	-	-	-	-	Jute bobbins & other specific applications.
HE-9	63400	M	-	11	13	-	The best general properties, Architectural sections such as window & door frames, curtain walling, hand rail wall facing, trimmings & mouldings, window sections in transport, irrigation tubing etc, anodising finish is good.
		W	8	14	14	45	
		WP	15.5	19	7	62	
HE-15	24345	W	23.5	39.5	10	-	Aircraft, structures, truck frames etc. requiring very high strength, heat treatable, workability & corrosion resistance fair, weidability good for arc & resistance welding.
		WP	42.5	49	6	-	
HE-20	65032	M	-	11	12	-	General structural & architectural applications such as rallings supports transportation components, etc. where both surface finish & strength are important can be anodised.
		W	11	19	14	60	
		WP	23.5	28.5	7	90	
HE-30	64430	M	-	11	12	-	Structural applications of all kinds such as road and rail transport and vehicle bridges, cranes, roof towers, marine applications, rivers etc. good wear resistance & machinability.
		W	11	19	14	60	
		WP	25	30	7	95	

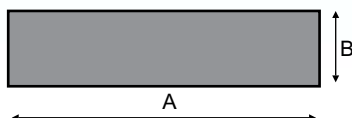
Wrought alloys: Chemical Composition limits (percent)

Alloy (ISS)		Equivalent alloy (AA)	Copper		Magnesium		Silicon		Iron	Manganese		*Other (Total)	Remarks.
Old	New	USA	Min.	Max.	Min.	Max.	Min.	Max.	Max	Min.	Max	Max	
1 C	19000	1100	-	0.10	-	-	-	0.5	0.6	-	0.1	0.1	Aluminium 99.0% Min.
		1200	-	0.05	-	-	Si+Fe 1.0			-	0.05	0.1	Aluminium 99.0% Min.
1 B	19500	1050	-	0.05	-	-	-	0.25	0.4	-	0.05	0.1	Aluminium 99.5% Min.
1 E	19501	-	-	0.04	-	-	-	0.15	0.35	-	0.03	0.1	Aluminium 99.5% Min.
		1350	-	0.05	-	-	-	0.1	0.4	-	0.01	0.1	Aluminium 99.5% Min.
-	19600	1060	-	0.05	-	-	-	0.25	0.35	-	0.03	0.1	Aluminium 99.6% Min.
-	19700	1070	-	0.03	-	-	-	0.2	0.25	-	0.03	0.1	Aluminium 99.7% Min.
H 15	24345	2014	3.8	5.0	0.2	0.8	0.5	1.2	0.7	0.3	1.2	0.5	-
H 14	24534	2017	3.5	4.7	0.4	1.2	0.2	0.7	0.7	0.4	1.2	0.5	-
N3	31000	3003	-	0.1	-	0.1	-	0.6	0.7	1.0	1.5	0.4	-
N21	43000	4043	-	0.1	-	0.2	4.5	6	0.6	-	0.5	0.2	-
N2	46000	4047	-	0.1	-	0.2	10.0	13	0.6	-	0.5	0.2	-
N4	52000	5052	-	0.1	1.7	2.6	-	0.6	0.5	-	0.5	0.4	Cr + Mn = 0.5
N5	53000	5086	-	0.1	2.8	4	-	0.6	0.5	-	0.5	0.4	Cr + Mn = 0.5
N6	55000	5056	-	0.1	4.5	5.6	-	0.6	0.7	-	0.5	0.4	Chromium upto 0.25
N8	54300	5063	-	0.1	4	4.9	-	0.4	0.7	0.5	1.0	0.4	Chromium upto 0.25
H 20	65032	-	0.15	0.4	0.7	1.2	0.4	0.8	0.7	0.2	0.8	0.4	**Cr=0.15-0.35
%													
-	-	6061	0.15	0.4	0.8	1.2	0.4	0.8	0.7	-	0.15	0.4	Chromium 0.04 to 0.35
H9	63400	6063	-	0.1	0.4	0.9	0.3	0.7	0.6	-	0.3	0.4	-
-	-	6066	0.7	1.2	0.8	1.4	0.9	1.8	0.7	0.6	1.1	0.4	-
-	64423	-	0.5	1	0.5	1.3	0.7	1.3	0.8	-	1.0	-	-
91E	63401	6101	-	0.05	0.4	0.9	0.3	0.7	0.5	-	0.03	0.1	-
-	64401	6201	-	0.1	0.6	0.9	0.5	0.9	0.5	-	0.03	0.1	-
H 30	64430	6351	-	0.1	0.4	1.2	0.6	1.3	0.6	0.4	1.0	0.3	-
		6082	-	0.1	0.6	1.2	0.7	1.3	0.5	0.4	1.0	0.3	Chromium upto 0.25
-	74530	7039	-	0.2	1	1.5	-	0.4	0.7	0.2	0.7	0.4	Zinc 4.0 - 5.0%
-	-	7075	1.2	2.0	2.1	2.9	-	0.5	0.5	-	0.3	0.2	Zinc (5.1 - 6.1) % & Chromium (0.18-0.28) %

* Titanium and/or other grain refining elements.

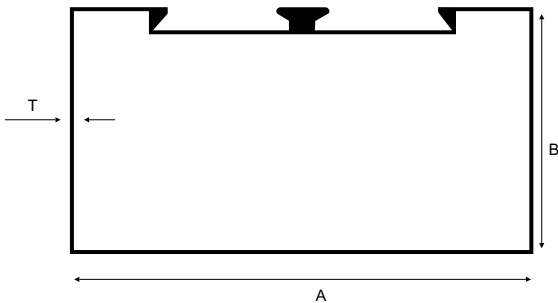
** Either Mn or Cr shall be present

FLAT BARS



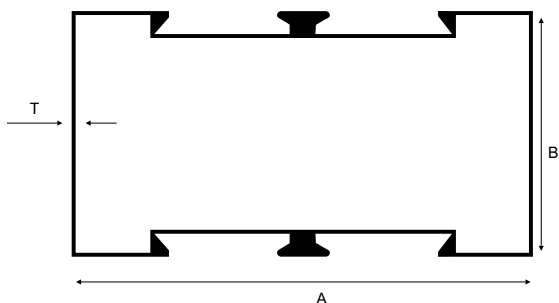
SL.	SEC.NO.	A	B	KG/M	WT/12'
1	9801	20	6	0.32	1.18
2	9833	20	9	0.47	1.65
3	9835	100	25	6.75	24.70
4	9802	20	10	0.54	1.97
5	9803	25	3	0.19	0.70
6	9804	25	6	0.41	1.48
7	9805	25	10	0.68	2.47
8	9806	25	12	0.81	2.96
9	9807	30	6	0.49	1.77
10	9808	30	10	0.81	2.96
11	9809	30	12	0.97	3.65
12	9834	32	12	1.05	3.90
13	9810	40	3	0.33	1.20
14	9811	40	6	0.65	2.37
15	9812	40	10	1.08	3.95
16	9813	40	12	1.30	4.74
17	9814	50	6	0.81	2.96
18	9815	50	10	1.35	4.93
19	9816	50	12	1.62	5.92
20	9817	63	6	1.00	3.70
21	9818	63	10	1.70	6.22
22	9819	63	12	2.04	7.46
23	9820	75	6	1.19	4.40
24	9821	75	10	2.00	7.40
25	9822	75	12	2.38	8.80
26	9823	80	6	1.30	4.74
27	9824	80	10	2.16	7.90
28	9825	80	12	2.59	9.50
29	9826	100	6	1.62	5.92
30	9827	100	10	2.70	9.87
31	9828	100	12	3.24	11.85
32	9829	125	10	3.37	12.34
33	9830	125	12	4.01	14.80
34	9831	150	10	4.05	14.82
35	9832	150	12	4.86	17.78

SINGLE PARTITION (SP)



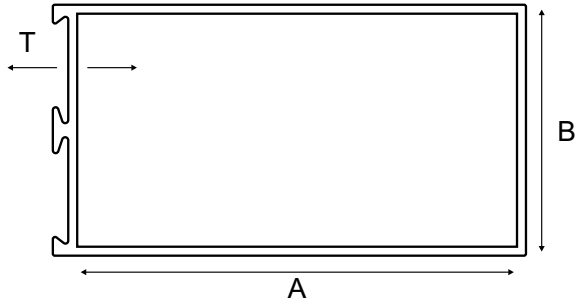
SL.	SEC.NO.	A	B	T	KG/MTR	C/L.	SEC.WT.RANGE
1	9001	50.80	25.40	1.20	0.581	15'	2.400-2.600
2	9002	63.50	38.10	1.00	0.600	15'	2.700-3.000
3	9003	63.50	38.10	1.30	0.690	15'	3.300-3.500
4	9004	63.50	38.10	1.45	0.742	15'	3.800-4.100
5	9005	63.50	38.10	1.95	1.051	15'	4.800-5.100
6	9006	63.50	38.10	2.80	1.470	15'	6.800-7.200
7	9007	83.50	38.00	1.55	1.114	15'	4.800-5.100
8	9007/1	83.50	38.00	2.25	1.50	15'	6.800-7.200
9	8999	92.00	25.00	1.20	0.780	15'	3.500-3.700
10	9008	101.60	44.45	1.35	1.056	15'	4.900-5.200
11	9008/1	101.60	44.45	1.60	1.280	15'	5.800-6.200
12	9009	101.60	44.45	1.90	1.526	15'	6.800-7.200
13	9010	101.60	44.45	2.50	2.140	15'	8.800-9.500
14	9011	101.60	44.45	3.00	2.470	15'	10.800-11.600
15	9000	122.00	25.00	1.30	1.080	15'	4.800-5.100
16	9012	125.00	38.00	1.95	1.730	15'	7.800-8.300
17	9013	125.00	38.00	2.70	2.380	15'	10.800-11.600
18	9014	125.00	44.00	1.60	1.500	15'	6.800-7.200
19	9015	125.00	44.00	2.00	1.800	15'	8.400-8.900
20	9016	125.00	44.00	2.70	2.380	15'	11.100-12.000
21	9017	125.00	25.00	1.45	1.100	15'	5.500-5.800
22	9018	150.00	44.45	1.70	2.200	15'	8.100-8.600
23	9019	150.00	44.45	3.00	3.161	15'	14.000-15.000
24	8998	100.00	25.00	1.20	0.850	15'	3.900 - 4.400

DOUBLE PARTITION (DP)



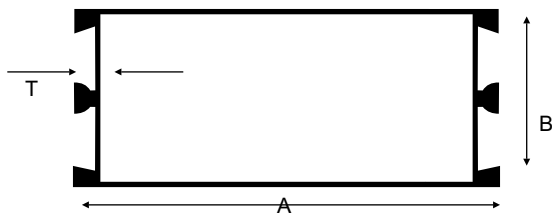
SL.	SEC.NO.	A	B	T	KG/MTR	C/L.	SEC.WT.RANGE
1	9020	50.80	25.40	1.10	0.581	15'	2.400-2.600
2	9021	63.50	38.10	0.95	0.600	15'	2.700-3.000
3	9022	63.50	38.10	1.20	0.690	15'	3.300-3.500
4	9023	63.50	38.10	1.40	0.742	15'	3.800-4.100
5	9024	63.50	38.10	1.80	1.051	15'	4.800-5.100
6	9025	63.50	38.10	2.65	1.470	15'	6.800-7.100
7	9026	83.50	38.00	1.45	1.24	15'	4.800-5.100
8	9026/1	83.50	38.00	2.10	1.50	15'	6.800-7.200
9	9027	101.60	44.45	1.30	1.056	15'	4.900-5.200
10	9027/1	101.60	44.45	1.50	1.280	15'	5.800-6.200
11	9028	101.60	44.45	1.80	1.526	15'	6.800-7.200
12	9029	101.60	44.45	2.40	2.140	15'	8.800-9.500
13	9030	101.60	44.45	2.95	2.470	15'	10.800-11.600
14	9031	125.00	38.00	1.75	1.730	15'	7.800-8.300
15	9032	125.00	38.00	2.45	2.380	15'	10.800-11.600
16	9033	125.00	44.00	1.50	1.500	15'	6.800-7.200
17	9034	125.00	44.00	1.75	1.800	15'	8.400-8.900
18	9035	125.00	44.00	2.60	2.380	15'	11.100-12.000

DOOR MIDDLE SINGLE (DMS)



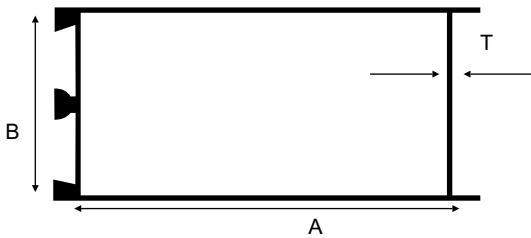
SL.	SEC. NO.	A	B	T	KG/MTR	C/L.	SEC. WT.RANGE
1	9041	47.50	44.45	1.25	0.70	15'	2.800-3.100
2	9042	47.50	44.45	1.50	0.80	15'	3.400-3.600
3	9043	47.50	44.45	1.70	0.89	15'	3.800-4.100
4	9044	47.50	44.45	2.15	1.03	15'	4.800-5.100
5	9045	47.50	44.45	3.15	1.54	15'	6.800-7.100
6	9046	83.00	44.45	1.60	1.14	15'	5.100-5.300
7	9047	83.00	44.45	1.85	1.43	15'	5.800-6.100
8	9048	83.00	44.45	2.60	1.83	15'	7.900-8.200
9	9049	83.00	44.45	3.00	2.15	15'	9.200-9.500
10	9050	150.00	44.45	2.00	2.08	15'	9.500-10.00
11	9051	150.00	44.45	2.90	2.98	15'	13.50-14.00

DOOR MIDDLE DOUBLE (DMD)



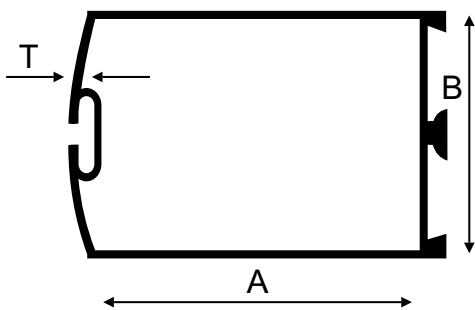
SL.	SEC. NO.	A	B	T	KG/MTR	C/L.	SEC. WT.RANGE
1	9061	47.50	44.45	1.05	0.70	15'	2.800-3.100
2	9062	47.50	44.45	1.35	0.80	15'	3.400-3.600
3	9063	47.50	44.45	1.50	0.89	15'	3.800-4.100
4	9064	47.50	44.45	2.05	1.03	15'	4.800-5.100
5	9065	47.50	44.45	3.10	1.54	15'	6.800-7.100
6	9066	83.00	44.45	1.50	1.14	15'	5.100-5.300
7	9067	83.00	44.45	1.85	1.43	15'	5.800-6.100
8	9068	83.00	44.45	2.50	1.83	15'	7.900-8.200
9	9069	83.00	44.45	3.00	2.15	15'	9.200-9.500
10	9070	150.00	44.45	2.00	2.08	15'	9.500-10.00
11	9071	150.00	44.45	2.70	2.98	15'	13.50-14.00

DOOR TOP & BOTTOM



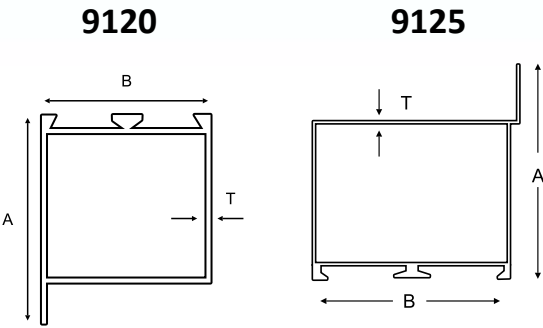
SL.	SEC.N O.	A	B	T	KG/M TR	C/L .	SEC.W T.RANGE
1	9081	47.50	44.45	1.25	0.70	15'	2.800-3.100
2	9082	47.50	44.45	1.50	0.80	15'	3.400-3.600
3	9083	47.50	44.45	1.75	0.89	15'	3.800-4.100
4	9084	47.50	44.45	2.15	1.03	15'	4.800-5.100
5	9085	47.50	44.45	3.00	1.54	15'	6.800-7.100
6	9086	83.00	44.45	1.60	1.14	15'	5.100-5.300
7	9087	83.00	44.45	1.90	1.43	15'	5.800-6.100
8	9088	83.00	44.45	2.50	1.83	15'	7.900-8.200
9	9089	83.00	44.45	3.00	2.15	15'	9.200-9.500
10	9090	114.30	44.45	1.30	1.20	15'	5.100-5.300
11	9091	114.30	44.45	1.70	1.77	15'	6.800-7.100
12	9092	114.30	44.45	2.20	2.24	15'	8.800-9.100
13	9093	114.30	44.45	2.90	2.62	15'	11.600-12.000
14	9095	150.00	44.45	2.00	2.08	15'	9.500-10.000
15	9096	150.00	44.45	2.70	2.98	15'	13.500-14.000

DOOR VERTICAL

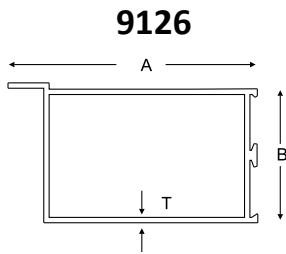


SL.	SEC.N O.	A	B	T	KG/M TR	C/L .	SEC.W T.RANGE
1	9101	47.50	44.45	1.20	0.70	15'	2.800-3.100
2	9102	47.50	44.45	1.40	0.80	15'	3.400-3.600
3	9103	47.50	44.45	1.60	0.89	15'	3.800-4.100
4	9104	47.50	44.45	2.05	1.03	15'	4.800-5.100
5	9105	47.50	44.45	2.80	1.54	15'	6.800-7.100
6	9106	83.00	44.45	1.60	1.14	15'	5.100-5.300
7	9107	83.00	44.45	1.80	1.43	15'	5.800-6.100
8	9108	83.00	44.45	2.45	1.83	15'	7.900-8.200
9	9109	83.00	44.45	2.85	2.15	15'	9.200-9.500

SINGLE LEG



SEC.NO	A	B	T	KG/M	15'WT.RANGE
9120	47.50	44.45	1.35	0.68	2.800-3.500
9121	47.50	44.45	1.70	0.82	3.700-3.900
9122	47.50	44.45	2.10	1.04	4.700-4.900
9123	47.50	44.45	3.00	1.47	6.700-6.900
9125	47.50	44.45	1.35	0.69	2.900-3.100
9126	83.00	44.45	1.50	1.08	4.800-5.100

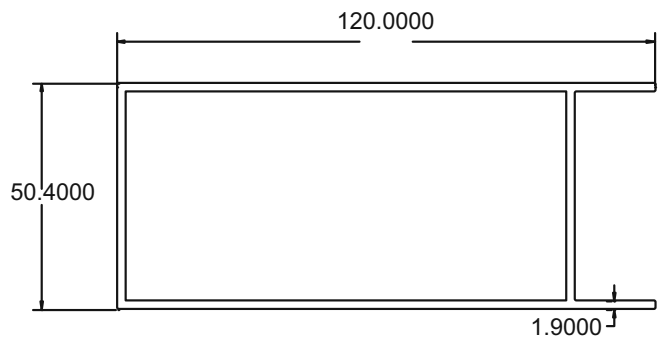
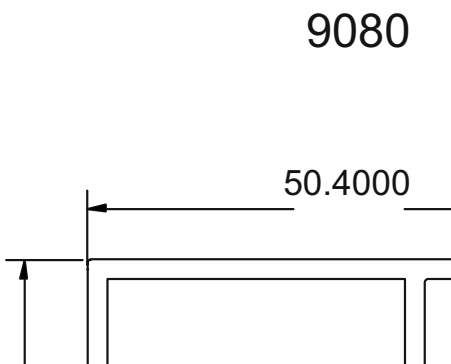


9080

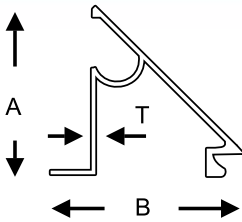
(3.600-3.900) Kg/12'

9900

(6.200 - 6.600) Kg/12'

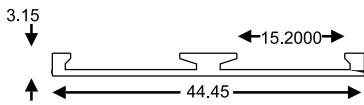


GLAZING CLIP



SL.	SEC. NO.	A	B	T	KG/MTR	C/L.	SEC.WT.RANGE
1	9401	16.85	16.75	0.50	0.070	12'	0.250-0.290
2	9402	16.85	16.75	0.57	0.080	12'	0.290-0.330
3	9403	16.85	16.75	0.67	0.093	12'	0.330-0.400
4	9404	16.85	16.75	0.80	0.111	12'	0.400-0.450
5	9405	16.85	16.75	0.92	0.128	12'	0.450-0.520
6	9406	16.85	16.75	1.05	0.146	12'	0.520-0.600

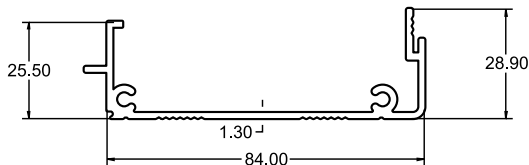
GLAZING PLATE



SL.	SEC. NO.	A	B	T	KG/MTR	C/L.	SEC.WT.RANGE
1	9411	44.45	3.50	0.50	0.143	12'	0.500-0.600

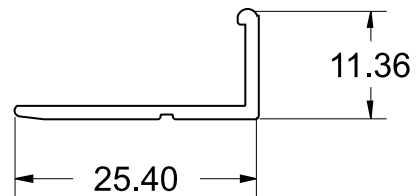
Wt=2.300 Kg/12'

9350



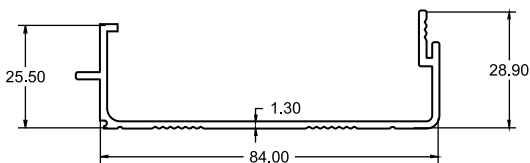
Wt = 0.450 Kg / 12'

9352

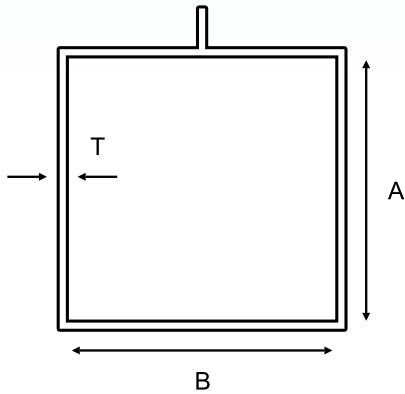


Wt = 1.900 Kg/12'

9351

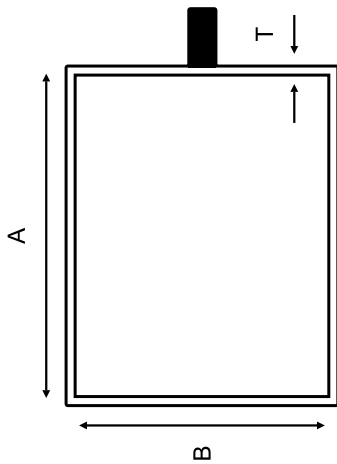


STRUCTURE/CURTAIN WALL



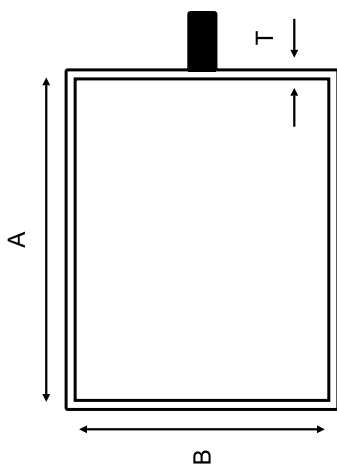
SEC.NO	A	B	T	KG/M	15' WT.RANGE
9501	50	50	1.350	0.755	3.200-3.500
9501/2	50	50	1.800	0.845	3.800-4.00
9501/3	50	50	2.300	1.080	4.800-5.200

STRUCTURE/CURTAIN WALL



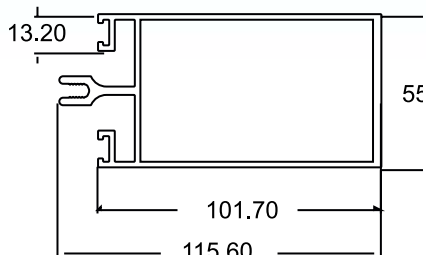
SEC.NO	A	B	T	KG/M	15' WT.RANGE
9502	63	58	1.600	0.755	4.800-5.200
9503	63	58	2.000	1.250	5.800-6.200
9503/2	63	58	2.800	1.860	8.400-8.700

STRUCTURE/CURTAIN WALL



SEC.NO	A	B	T	KG/M	15' WT.RANGE
9504	80	50	1.50	0.76	4.800-5.200
9505	80	50	1.75	1.30	5.400-5.700
9506	80	50	2.20	1.73	6.800-7.200
9506/2	80	50	2.50	1.78	8.00-8.300
9573	100	57	1.85	1.55	7.000-7.400

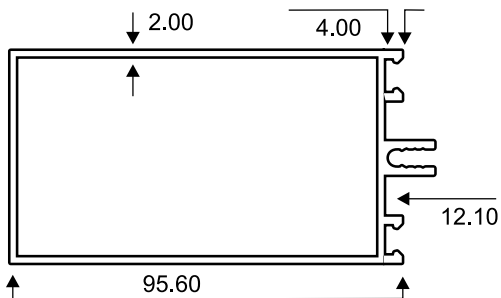
CURTAIN WALL



SEC.NO	A	B	C	T	KG/M	15' WT.RANGE
9507	88.50	55.00	27.00	2.10	2.310	10.800-11.200

SEC.NO	A	B	C	T	KG/M	15' WT.RANGE
9508	100.00	67.00	31.16	3.20	2.560	12.000-12.500
9509	50.00	67.00	31.16	2.00	1.600	7.500-8.000

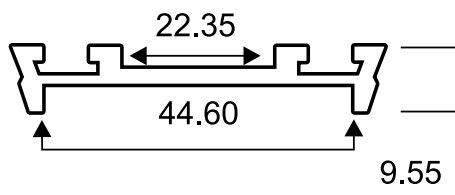
9508



SEC.NO	A	B	C	T	KG/M	15' WT.RANGE
9510	95.60	55.00	11.80	1.80	1.630	7.600-7.900
9513	100.00	57.00	05.00	1.85	1.550	7.000-7.400

PRESSURE PLATE

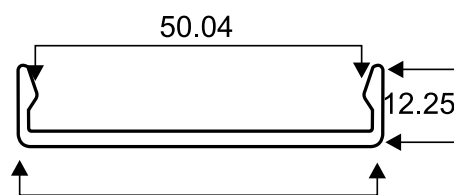
1.700 - 1.850 Kg/12'



9515

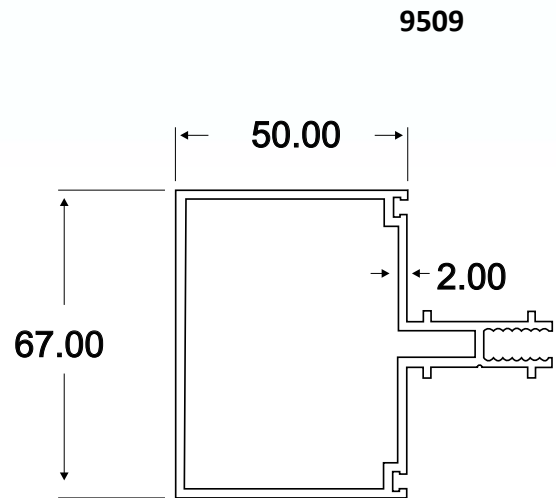
COVER PLATE

1.500 - 1.600 Kg/12'

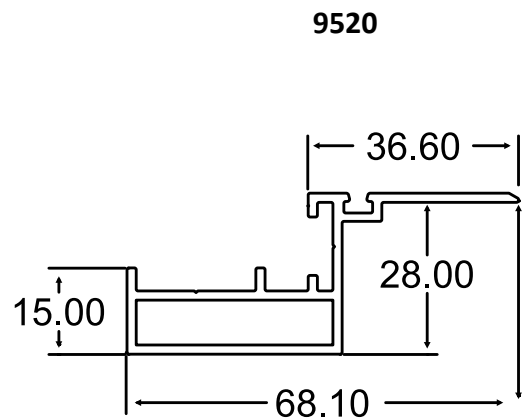


9516

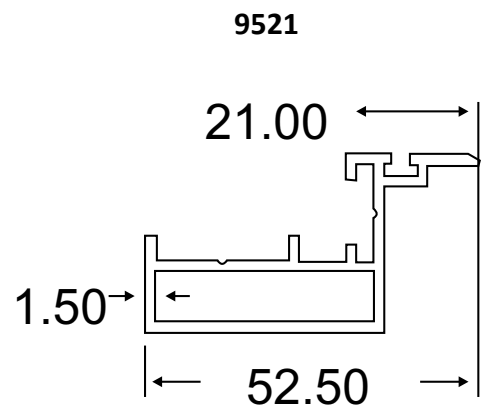
SL.	SEC. NO.	A	B	T	15' Wt. RANGE
1	9509	67.00	50.00	2.00	7.400 - 8.000



SL.	SEC. NO.	A	B	T	15' Wt. RANGE
1	9520	68.1	28.00	1.50	3.200 - 3.500



SL.	SEC. NO.	A	B	T	15' Wt. RANGE
1	9521	52.5	28.00	1.50	2.700 - 3.200



SLIDING WINDOW TRACKS

TWO TRACK TOP

SEC.NO	A	B	T	KG/M	12'WT.RANGE
9604	62	32	0.85	0.43	1.50-1.80

TWO TRACK BOTTOM

SEC.NO	A	B	T	KG/M	12'WT.RANGE
9605	62	32	0.70	0.41	1.50-1.80

THREE TRACK TOP

SEC.NO	A	B	T	KG/M	12'WT.RANGE
9606	92	32	0.80	0.75	2.100-2.300
9606/1	92	32	1.15	0.82	2.80-3.10

THREE TRACK BOTTOM

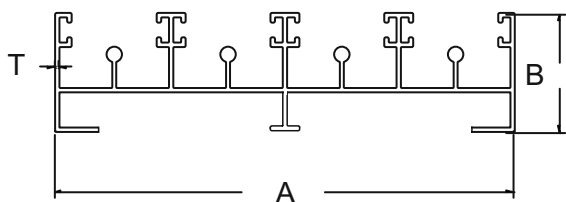
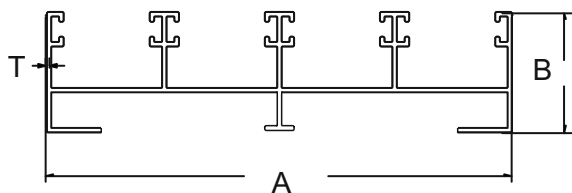
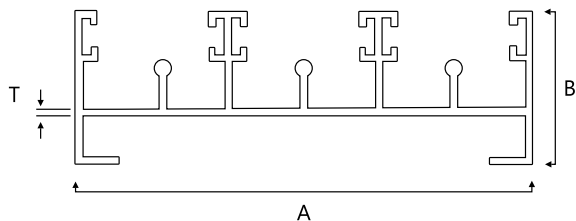
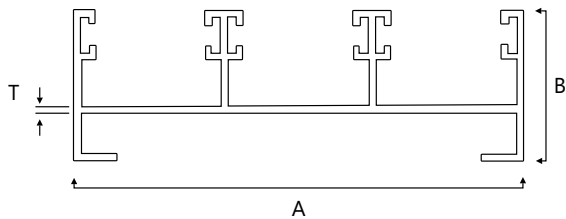
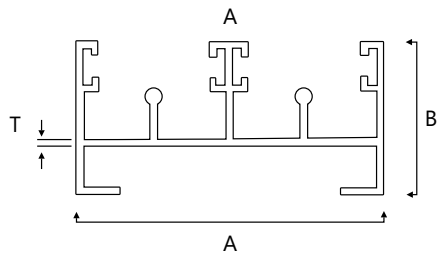
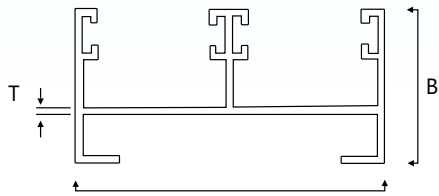
SEC.NO	A	B	T	KG/M	12'WT.RANGE
9607	92	32	1.00	0.70	2.100-2.300
9607/1	92	32	1.15	1.00	2.80-3.10

FOUR TRACK TOP

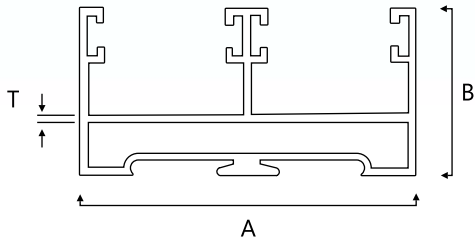
SEC.NO	A	B	T	KG/M	12'WT.RANGE
9608	122	32	1.10	0.94	3.600-3.800
9608/1	122	32	1.20	1.08	3.850-4.050

FOUR TRACK BOTTOM

SEC.NO	A	B	T	KG/M	12'WT.RANGE
9609	122	32	1.10	0.94	3.600-3.800
9609/1	122	32	1.20	1.08	3.850-4.050

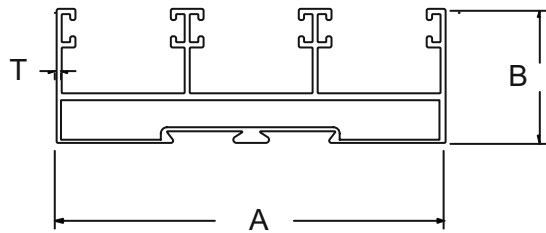
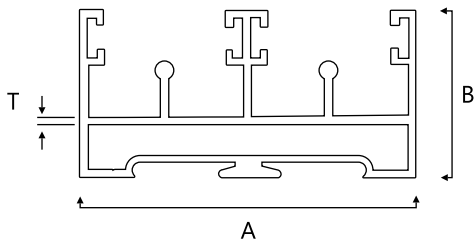


SLIDING WINDOW BOX TRACKS



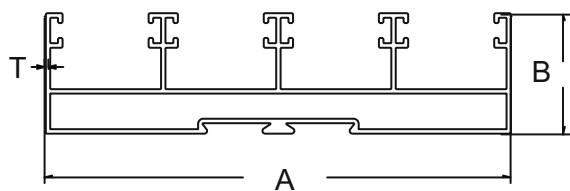
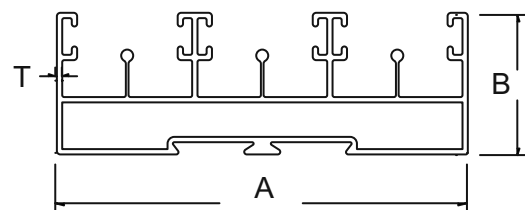
TWO TRACK BOX

SEC.NO	A	B	T	KG/M	12'WT.RANGE	
9614	62	32	1.50	1.00	3.500-3.800	TOP
9615	62	32	1.50	1.20	3.500-3.800	BOTTOM



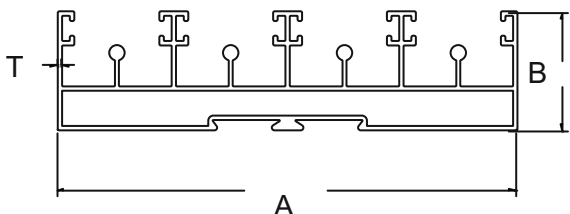
THREE TRACK BOX

SEC.NO	A	B	T	KG/M	12'WT.RANGE	
9616	92	32	1.10	1.05	3.700-3.950	TOP
9617	92	32	1.10	1.19	4.100-4.450	BOTTOM



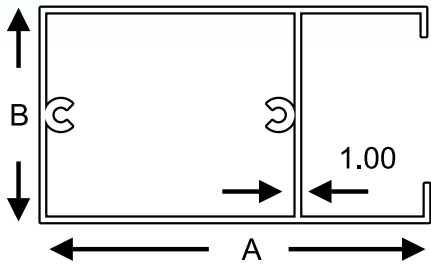
FOUR TRACK BOX

SEC.NO	A	B	T	KG/M	12'WT.RANGE	
9618	122	32	1.20	1.46	5.200-5.500	TOP
9619	122	32	1.20	1.73	6.100-6.500	BOTTOM



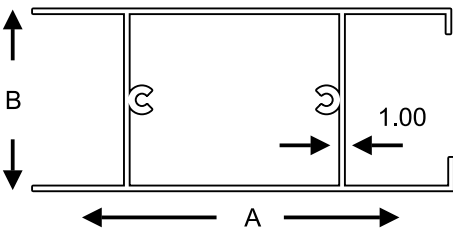
SLIDING WINDOW TRACKS

HANDLE



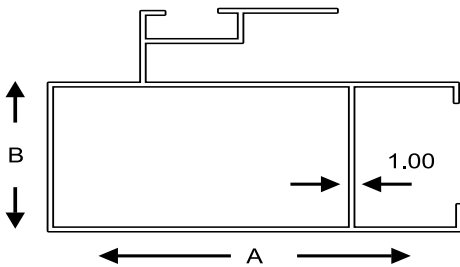
SEC.NO	A	B	T	KG/M	12'WT.RANGE
9601	40.4	18.28	1.10	0.42	1.400-1.600

TOP BOTTOM



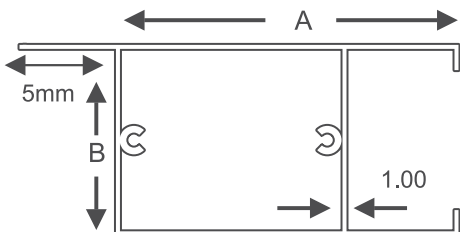
SEC.NO	A	B	T	KG/M	12'WT.RANGE
9602	40.4	18.28	1.10	0.42	1.400-1.600

INTERLOCK



SEC.NO	A	B	T	KG/M	12'WT.RANGE
9603	40.4	18.28	1.00	0.42	1.400-1.600

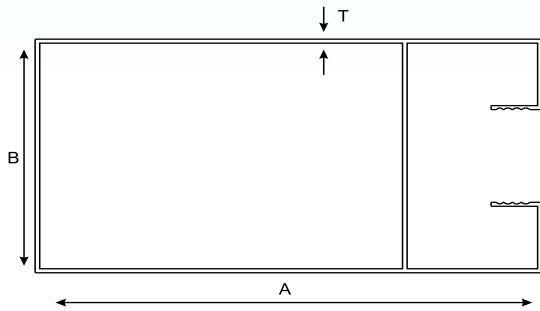
TOP BOTTOM SINGLE LEG



SEC.NO	A	B	T	KG/M	12'WT.RANGE
9603/1	40.4	18.28	1.20	0.42	1.400-1.600

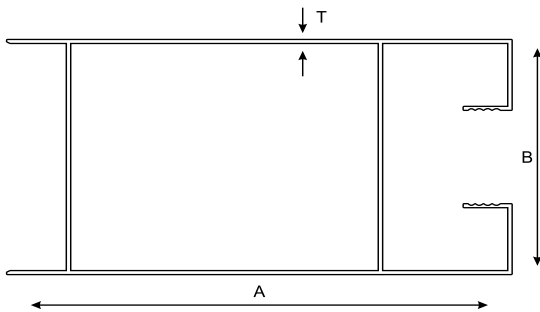
WINDOW SECTION

WINDOW SINGLE



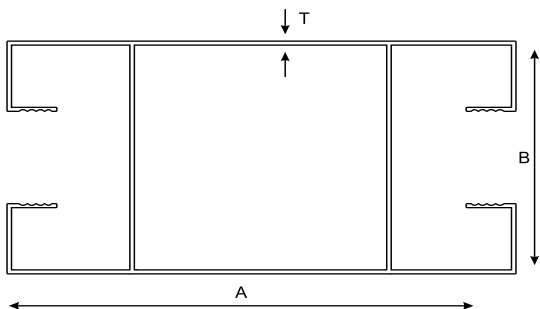
SEC.NO.	A	B	T	KG/MTR	C/L.	SEC.WT.RANGE
9620	50.8	25.4	1.10	0.450	15'	2.20-2.60
9621	60.55	32.27	1.10	0.628	15'	2.800-3.00
9621/1	60.55	32.27	1.30	0.921	15'	3.300-3.500
9631	84.34	38.38	1.40	1.040	15'	4.700-4.900

WINDOW BOTTOM



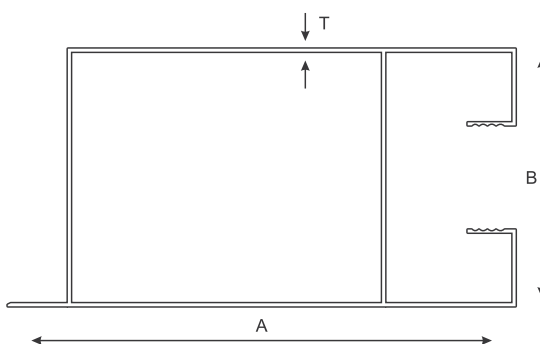
SEC.NO.	A	B	T	KG/MTR	C/L.	SEC.WT.RANGE
9622	60.55	32.27	1.10	0.628	15'	2.800-3.00
9622/1	60.55	32.27	1.30	0.921	15'	3.300-3.500
9632	84.34	38.38	1.45	1.040	15'	4.700-4.900

WINDOW DOUBLE



SEC.NO.	A	B	T	KG/MTR	C/L.	SEC.WT.RANGE
9625	50.8	25.4	1.10	0.450	15'	2.200-2.600
9623	60.55	32.27	1.00	0.628	15'	2.800-3.00
9623/1	60.55	32.27	1.15	0.921	15'	3.300-3.500
9633	84.34	38.38	1.30	1.040	15'	4.700-4.900

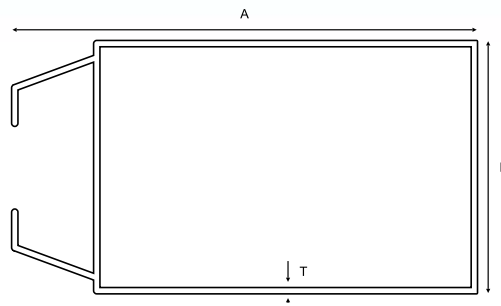
WINDOW SINGLE LEG



SEC.NO.	A	B	T	KG/MTR	C/L.	SEC.WT.RANGE
9624	60.55	32.27	1.30	0.9208	15'	3.300-3.500

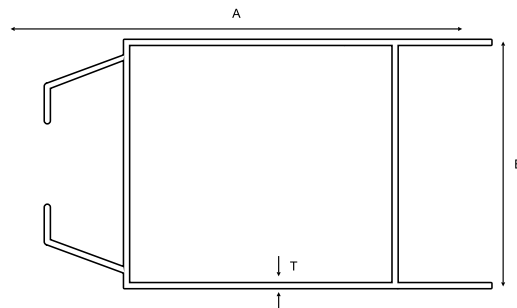
CHINESE WINDOW SECTION

WINDOW SINGLE



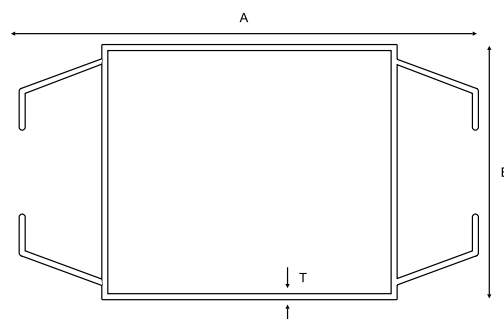
SEC.NO.	A	B	T	KG/MTR	C/L.	SEC.WT.RANGE
9641	60.55	32.27	1.30	0.628	15'	2.900-3.200

WINDOW BOTTOM



SEC.NO.	A	B	T	KG/MTR	C/L.	SEC.WT.RANGE
9642	60.55	32.27	1.30	0.628	15'	2.900-3.200

WINDOW DOUBLE

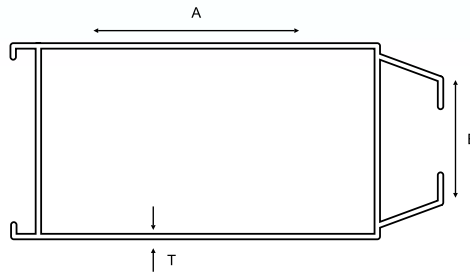


SEC.NO.	A	B	T	KG/MTR	C/L.	SEC.WT.RANGE
9643	60.55	32.27	1.30	0.628	15'	2.900-3.200

CHINESE WINDOW SECTION

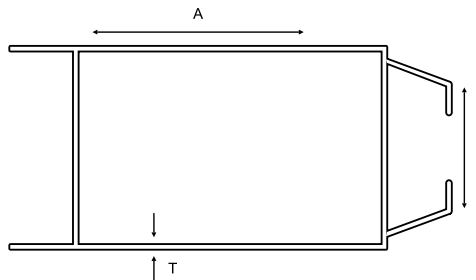
WINDOW SINGLE

21



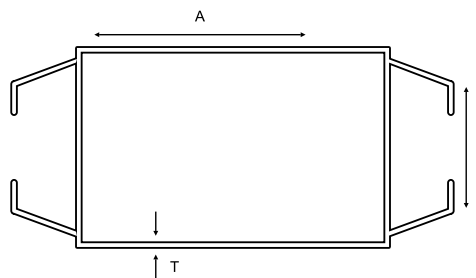
SEC.NO.	A	B	T	KG/MTR	C/L.	SEC.WT.RANGE
9651	84.34	38.38	1.65	1.040	15'	4.800-5.300

WINDOW BOTTOM



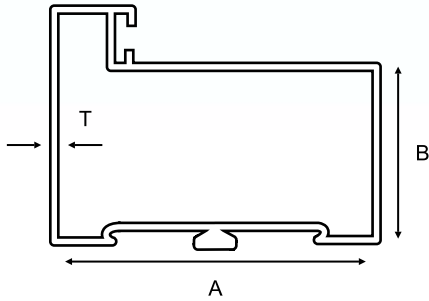
SEC.NO.	A	B	T	KG/MTR	C/L.	SEC.WT.RANGE
9653	84.34	38.38	1.65	1.040	15'	4.800-5.300

WINDOW DOUBLE



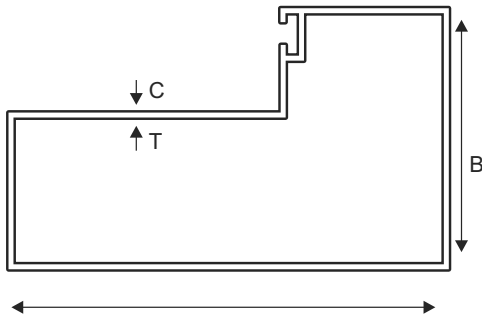
SEC.NO.	A	B	T	KG/MTR	C/L.	SEC.WT.RANGE
9652	84.34	38.38	1.55	1.040	15'	4.800-5.300

PATTAM



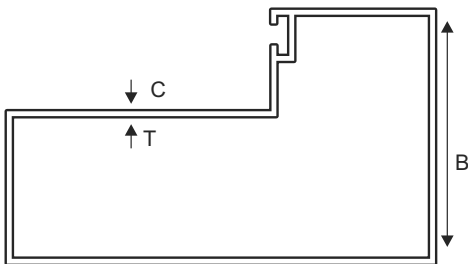
SEC.NO	A	B	T	KG/M	15' WT.RANGE
9531	63.4	38	1.45	0.860	4.00 - 4.50
9531/1	63.4	38	1.60	1.170	4.60 - 4.90

1.200 Kg/m



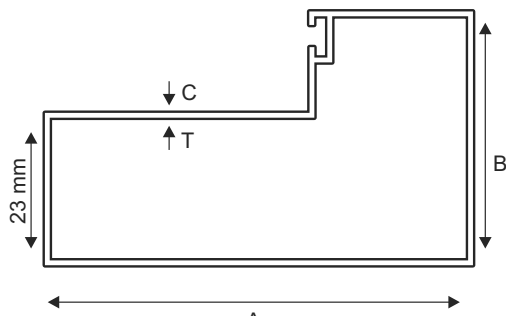
SEC.NO	A	B	C	T	KG/M	15' WT.RANGE
9532/1	101	44.45	38.00	1.90	2.000	7.600 - 8.000
9532/2	101	44.45	38.00	2.70	2.360	10.500 - 11.200
9532/4	101	44.45	32.00	2.70	2.170	9.500 - 10.500
9532	101	44.45	45.00	1.50	1.150	5.200 - 5.500
9532/3	101	44.45	45.00	1.70	1.590	5.800 - 6.400
9532/3A	101	44.00	45.00	3.00	2.300	10.500-11.500

0.800 Kg/m



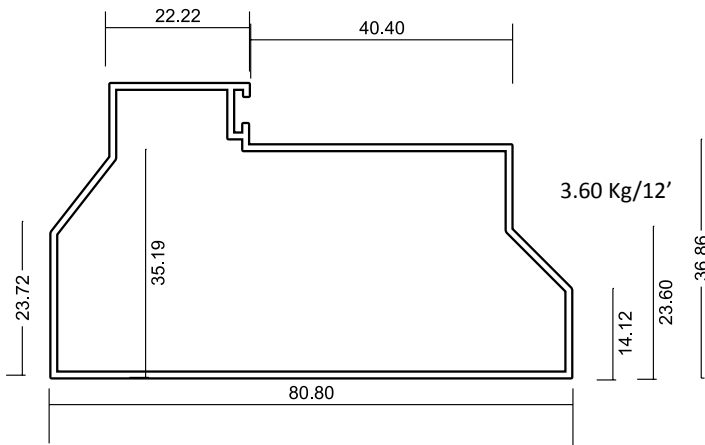
SEC.NO	A	B	C	T	KG/M	15' WT.RANGE
9533	63	38.1	39	1.20	0.80	2.900-3.200

0.800 Kg/m

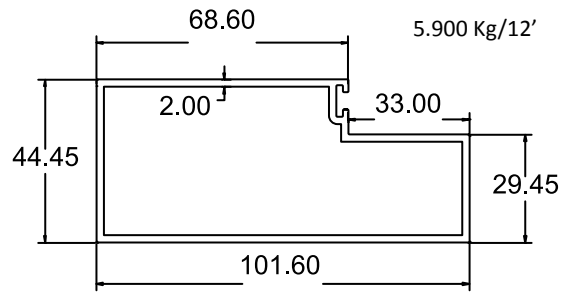


SEC.NO	A	B	C	T	KG/M	15' WT.RANGE
9534	63	38.1	33	1.20	0.80	2.900-3.200

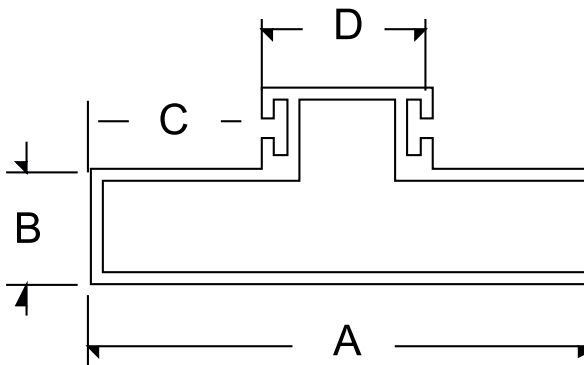
9535



9541

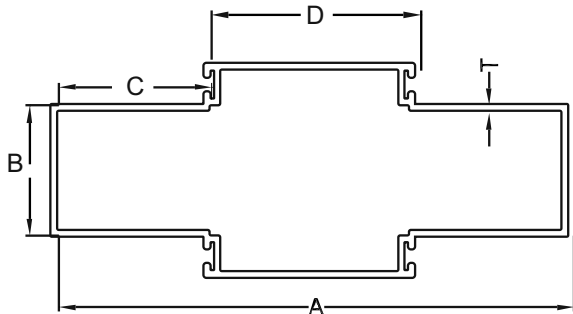


SINGLE PATTAM



SEC.NO	A	B	C	D	T	KG/M	15' WT.RANGE
9538	101	25.40	35.00	36.00	1.300	1.200	5.000-5.500
9537	116	38.10	40.00	36.00	1.500	1.400	6.400-6.900
9536	127	38.10	45.00	36.00	1.560	1.560	7.000-7.500
9539	152.4	38.10	45.00	61.40	2.000	2.000	9.500-10.500

DOUBLE PATTAM

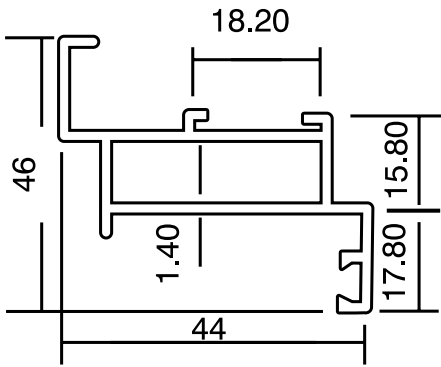


SEC.NO	A	B	C	D	T	KG/M	15' WT.RANGE
9540	152	38.1	45	61.4	2.00	2.350	10.700-11.500
9540/1	116	38.1	40	36	2.00	1.400	9.000-10.000

CASEMENT WINDOWS

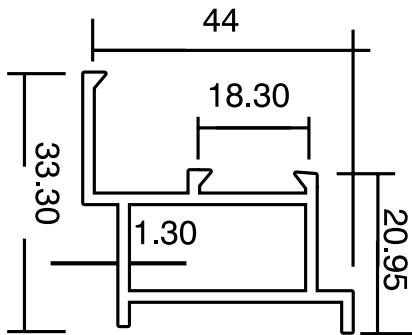
Hollow Z 9551

(2.700-3.00) Kg/15'



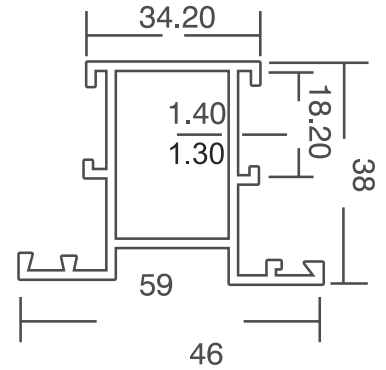
Line Z 9552

(2.200-2.400) Kg/15'



Mullion 9555

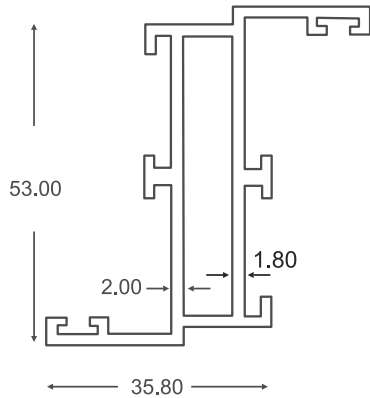
(2.700-3.00) Kg/15'



Big Hollow Z 9557

(4.300-4.500) Kg/15'

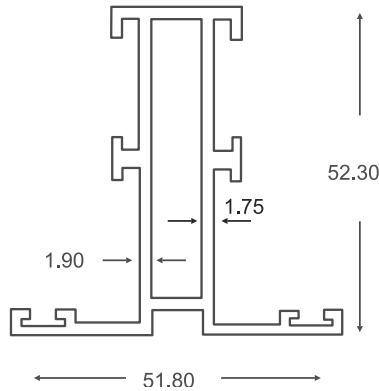
0.948 Kg/m



Big Mullion 9558

(4.300-4.500) Kg/15'

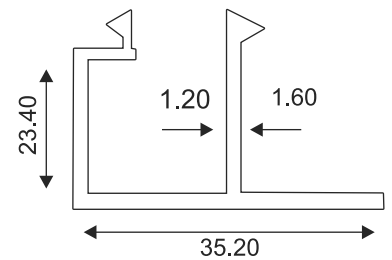
0.945 Kg/m



Big Z Clip 9559

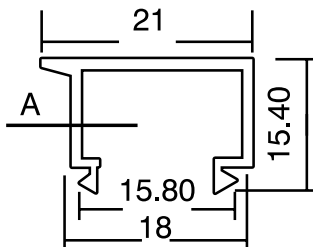
(1.100-1.200) Kg/15'

0.351 Kg/m



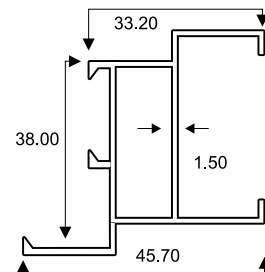
Z Clip 9556

(0.450-0.500) Kg/15'



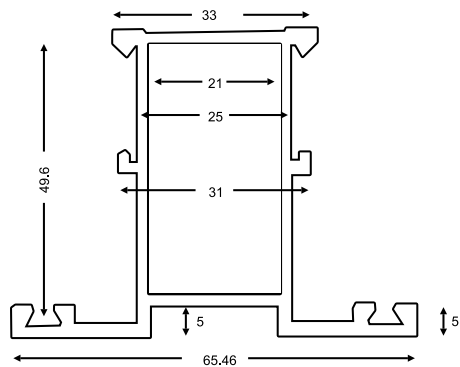
Box Z 9553

(2.200-2.400) Kg/15'

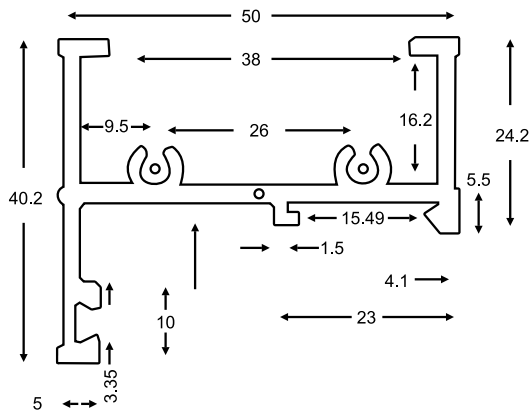


CHINESE CASEMENT WINDOW

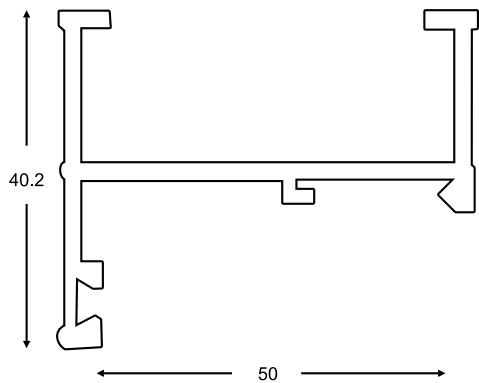
9571



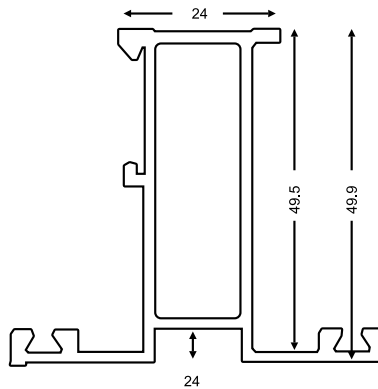
9573



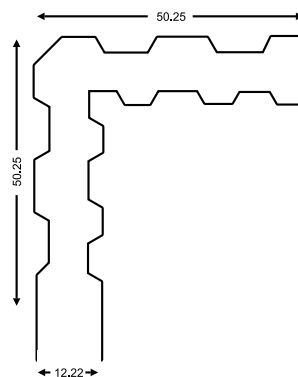
9577



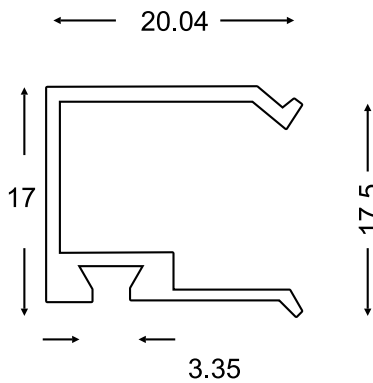
9572



9574



9578



LOOVER

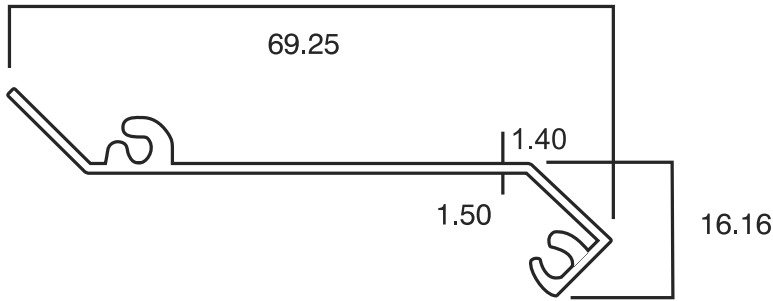
PHOTO FRAME

9590

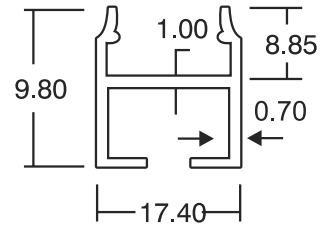
(1.600-1.800) Kg/15'

(0.400-0.500) Kg/12'

9591



17190 0.175Kg/m

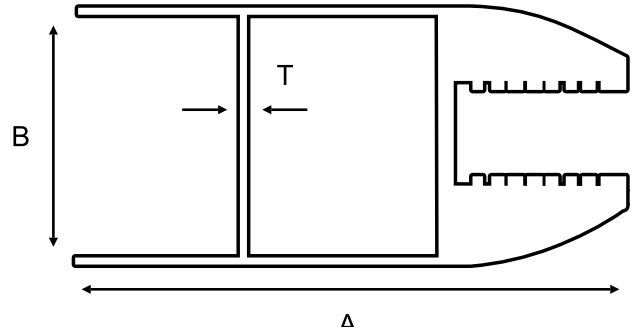
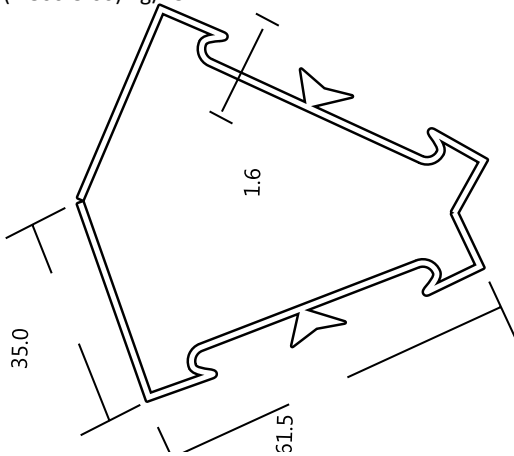


SAMOSIA SECTION

GLASS SECTION

(4.800-5.00) Kg/15'

0.978 Kg/M **9592**

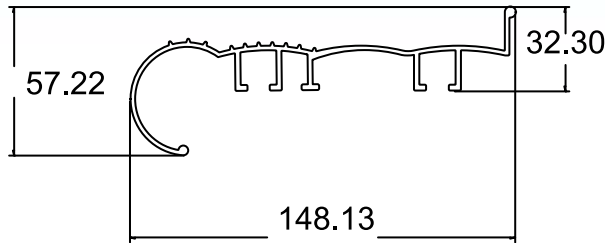


SEC.NO	A	B	T	KG/M	12'WT.RANGE
9150	88.5	44.45	1.4	2.3	8.00-9.00

9720

(5.600-7.000) Kg/12'

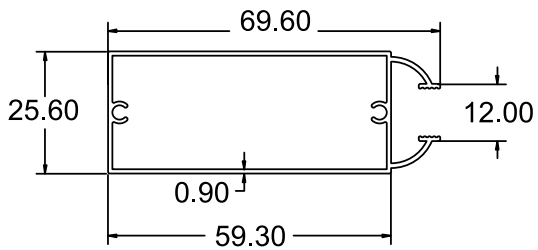
FOOT REST



HANDLE

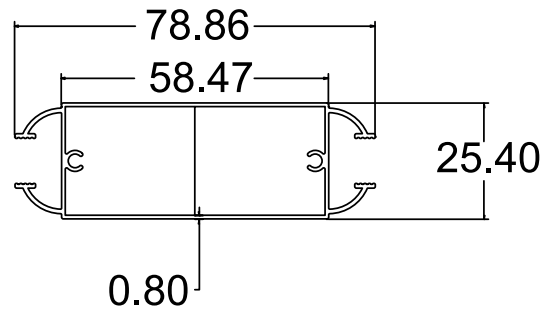
9640

(1.800-2.000) Kg/12'



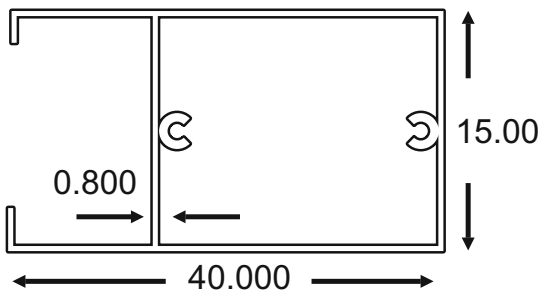
9644

(2.000-2.200) Kg/12'



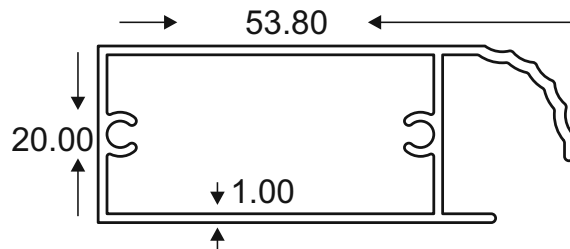
9601/1

(0.800-1.000) Kg/12'



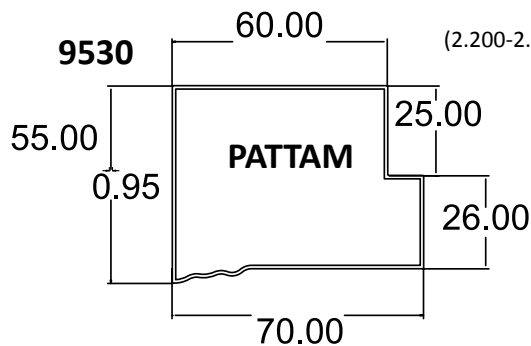
9601/2

(1.600-1.800) Kg/12'

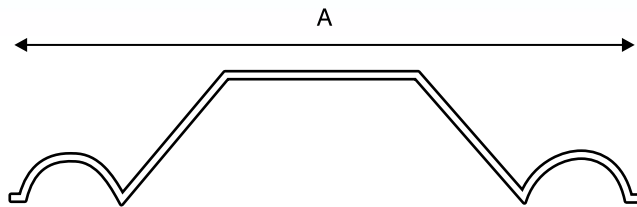


9530

(2.200-2.500) Kg/12'

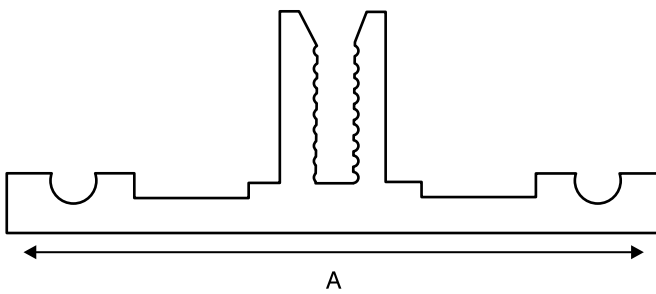


DOOM SECTION TOP



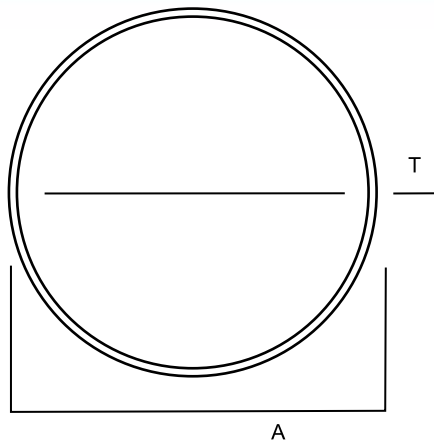
SEC.NO	A	KG/M	15' WT.RANGE
9671	50	0.334	1.600-1.800
9672	60	0.434	2.100-2.300

DOOM SECTION BOTTOM

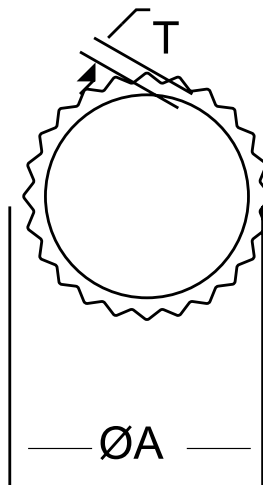


SEC.NO	A	KG/M	15' WT.RANGE
9673	50	0.484	2.300-2.500
9674	60	0.584	2.800-3000

ROUND TUBES



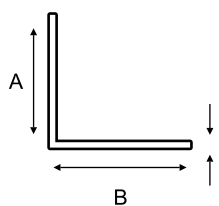
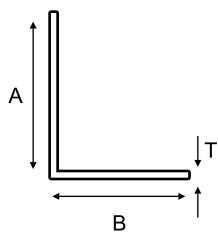
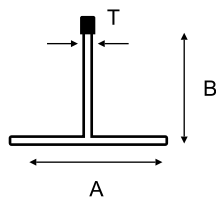
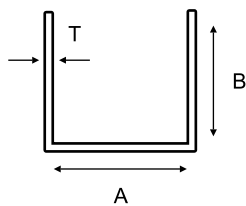
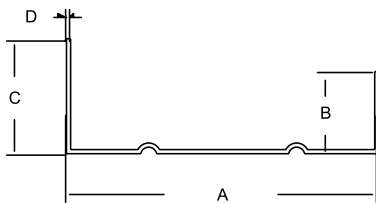
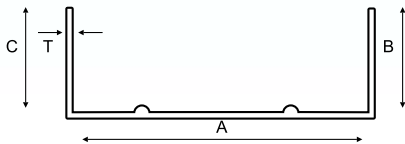
SL.	SEC.NO.	A	T	KG/M	WT/12'
1	9901	9.20	0.80	0.056	0.208 - 0.230
2	9902	10.00	3.00	0.609	0.600 - 0.700
3	9903	28.50	2.00	0.450	1.645 - 1.700
4	9904	50.00	3.00	2.714	4.200 - 4.000
5	9905	75.00	3.00	2.205	8.150 - 8.400
6	9906	100.00	3.00	2.468	9.035 - 9.300
7	9907	22.00	0.80	0.150	0.500 - 0.700
8	9908	63.80	3.05	1.540	5.600 - 5.800
9	9909	14.70	2.50	0.260	0.900 - 1.000
10	9910	25.40	30.00	0.560	2.000 - 2.1000
11	9911	32.00	1.60	0.510	0.850 - 1.750
12	9912	22.30	1.60	0.335	1.000-1.200
13	9913	22.30	3.80	0.671	2.100-2.300



FLUTED TUBE

SL.	SEC.NO.	Ø A	T	KG/M	WT/12'
1	9920	21.00	2.00	0.23	0.800 - 1.000
2	9921	28.2	1.20	0.23	0.800-1.000
3	9922	19.4	1.25	0.16	0.500 - 0.700

U-CHANNEL



SEC. NO.	A	B	C	T	KG/M	WT/12'
9331	90.00	25.00	25.00	1.30	0.470	1.700-1.900
9334	95.00	25.00	25.00	1.25	0.490	1.700-1.900

SEC. NO.	A	B	C	T	KG/M	WT/12'
9333	95.00	35.00	25.00	1.25	0.523	1.900-2.100
9332	90.00	35.00	25.00	1.25	0.500	1.800-2.000

SEC. NO.	A	B	T	KG/M	WT/12'
9311	12	12	0.80	0.070	0.25 -0.500
9312	25	12	1.80	0.220	0.810-1.000
9313	35	12	2.50	0.520	1.800-2.000
9314	18	25	2.10	0.300	1.200-1.350
9315	12	25	1.50	0.380	0.800-1.000

TEE

SEC. NO.	A	B	T	KG/M	WT/12'
9321	19	19	0.80	0.080	0.290-0.400
9322	25	25	1.60	0.130	0.700-8.800
9323	25	38	1.50	0.260	0.900-1.000
9324	25	38	2.20	0.370	1.300-1.450
9325	38	38	2.10	0.418	1.500-1.650

ANGLES

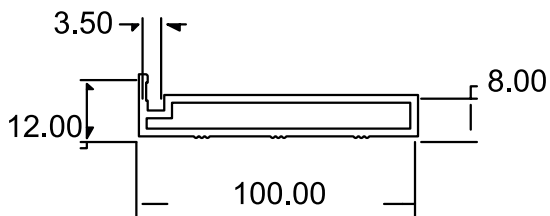
SEC. NO.	A	B	T	KG/M	WT/12'
9301	38	25	2.80	0.460	1.600-1.800
9302	38	25	4.00	0.650	2.300-2.500

SEC. NO.	A	B	T	KG/M	WT/12'
9303	19	19	1.70	0.190	0.600-0.800
9304	25	25	1.00	0.130	0.300-0.700
9305	38	38	2.70	0.540	1.800-2.300
9306	50	50	2.20	0.600	2.100-2.400

RECTANGULAR TUBES

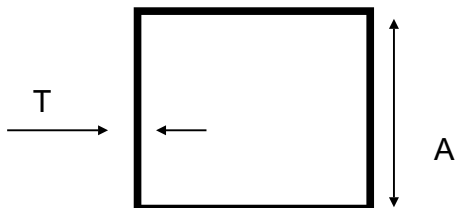


SL.	SEC.NO.	A	B	T	KG/MTR	12'WT.RANGE
1	9930	30	8	1.50	0.280	1.000-1.100
2	9201	38	25	1.10	0.343	1.20-1.50
3	9933	40	15	1.60	0.430	1.500-1.700
4	9200	40	19	1.40	0.420	1.500-1.600
5	9202	50	25	1.25	0.508	1.80-2.10
6	9203	63	38	0.90	0.482	1.70-2.10
7	9204	63	38	2.10	1.097	4.00-4.60
8	9932	63	25	1.20	0.560	2.000-2.100
9	9934	75	50	2.00	1.240	4.500-4.700
10	9205	75	25	1.60	0.870	3.00-3.400
11	9206	75	44	1.60	0.975	3.400-3.800
12	9207	101	44	1.90	1.448	5.00-6.00
13	9208	125	38	2.60	2.220	7.900-8.300
14	9209	125	38	3.40	2.925	10.600-11.100
15	9210	125	44	3.50	3.060	11.000-11.500



SL.	SEC.NO.	A	B	C	D	KG/MTR	12'WT.RANGE
1	9931	3.5	12	8	100	0.880	3.200-3.500

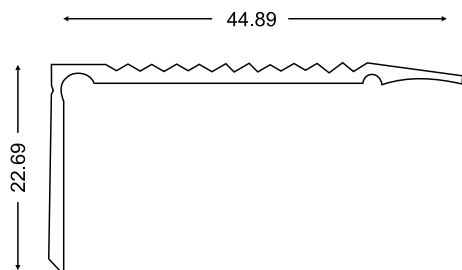
SQUARE TUBES



SL.	SEC.NO.	A	T	KG/MTR	12'WT.RANGE
1	9211	19	1.00	0.23	0.600-0.800
2	9212	25	1.00	0.209	0.800-1.000
3	9213	38	1.50	0.496	2.000-2.400
4	9214	50	1.50	0.746	2.800-3.200

STAIR SECTION PROFILE

9681



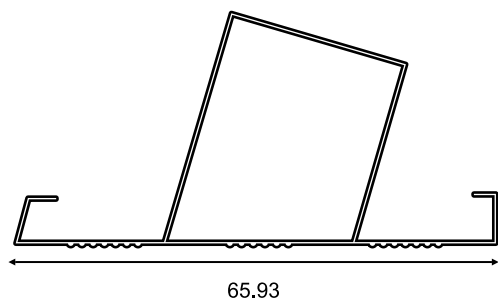
9682



LEADDER PROFILE

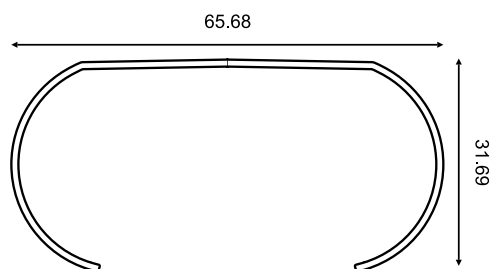
9683

(2.100-2.300) Kg/12'

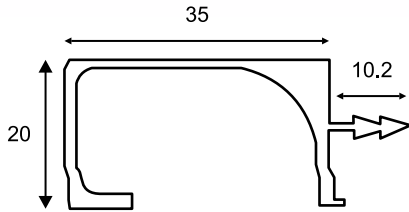


9684

(2.300-2.500) Kg/15'

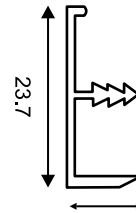


KITCHEN PROFILE



9692

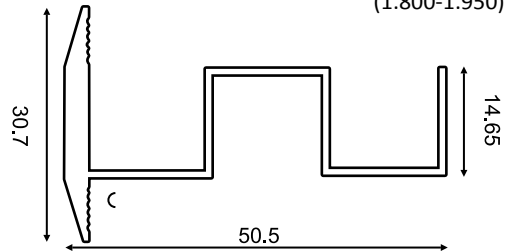
(0.500-0.550) Kg/12'



SL.	SEC.NO.	A	B	C	T	Apx. wt. Kg/m	12'WT. RANGE
1	9691	35.00	20.00	10.00	1.70	0.490	1.800-1.950
2	9691/1	34.80	20.00	10.00	1.30	0.430	1.550-1.700
3	9691/2	34.80	20.00	10.00	0.85	0.350	1.300-1.400

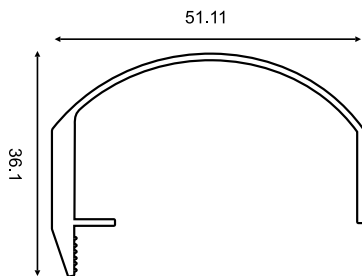
9693

(1.800-1.950) Kg/12'



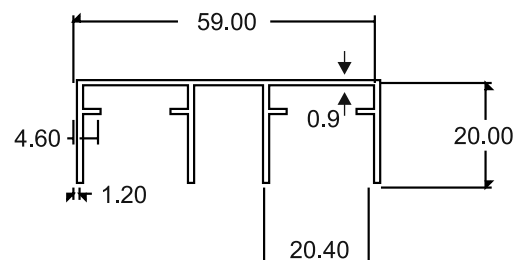
9694

(2.600-2.750) Kg/12'



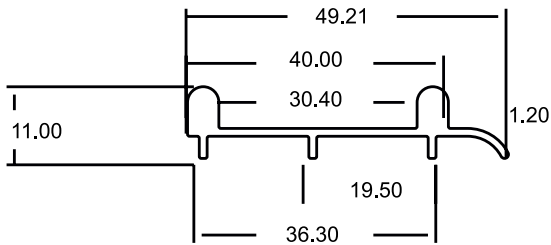
9335

(1.800-1.900) Kg/15'



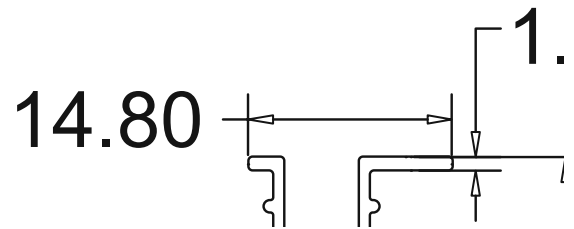
KITCHEN PROFILE

9336 (1.200-1.300) Kg/12'

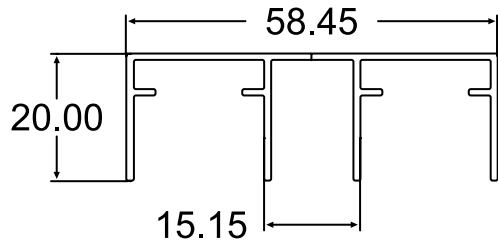


9339 (0.450-0.550) Kg/12'

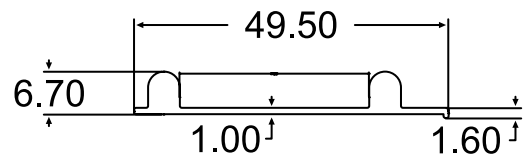
9339



9340 1.450 - 1.600 Kg/12'

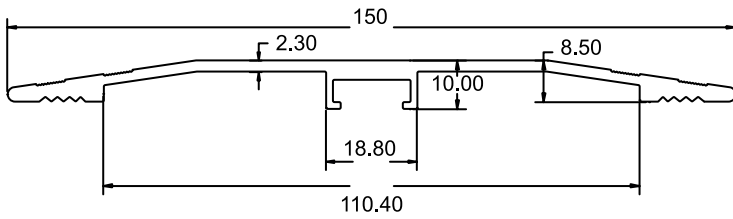


9341 1.000 - 1.100 Kg/12'



EXPANSION JOINT

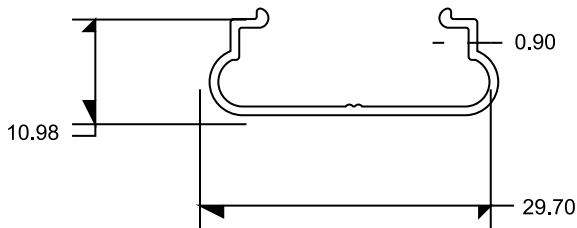
SEC.NO	A	B	C	T	APX. WT. KG/M	WT.RANGE IN 12'
9685	150.00	10.00	18.80	2.30	1.230	4.500 - 4.800



GARDEN CHANNAL

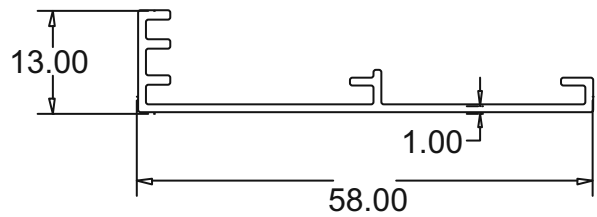
9318

(0.450-0.500) Kg/12'



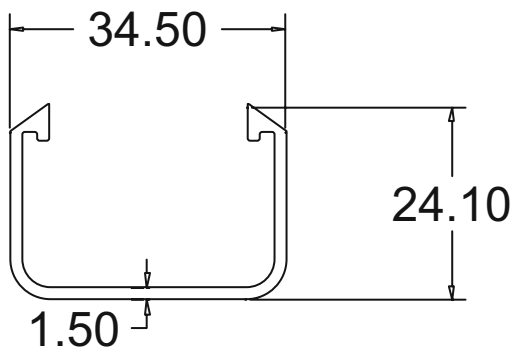
9337

(0.900-1.000) Kg/12'



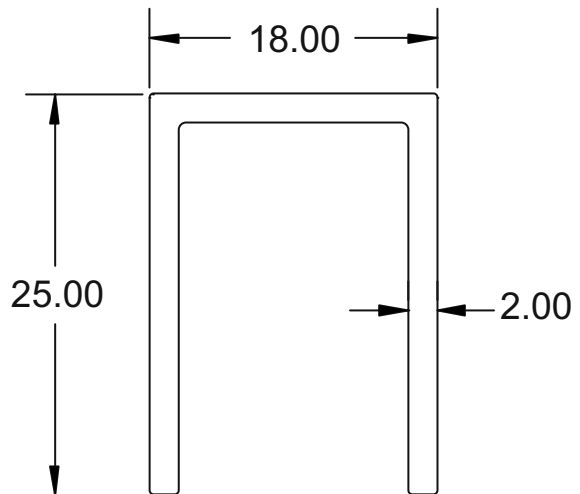
9338

(1.200-1.350) Kg/12'

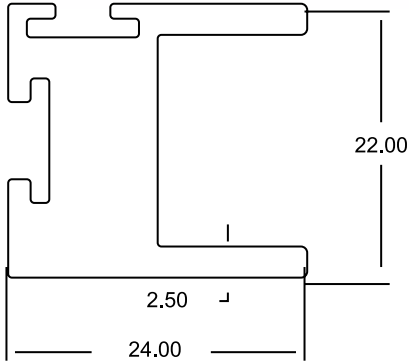


9314

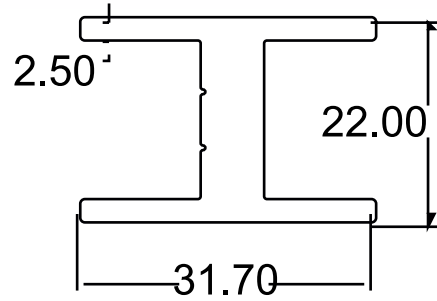
(1.200-1.350) Kg/12'



9731 (2.600-2.850) Kg/12'

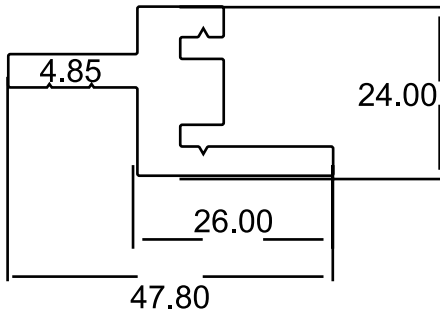


9736 (2.600-2.850) Kg/12'



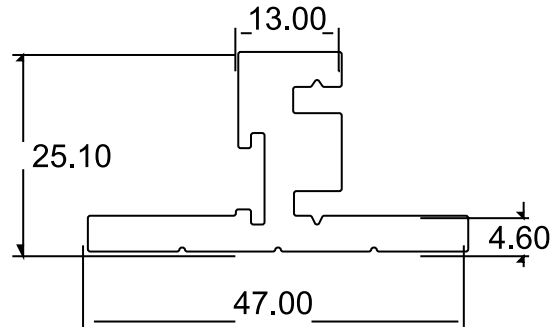
9741

(4.200-4.500) Kg/12'



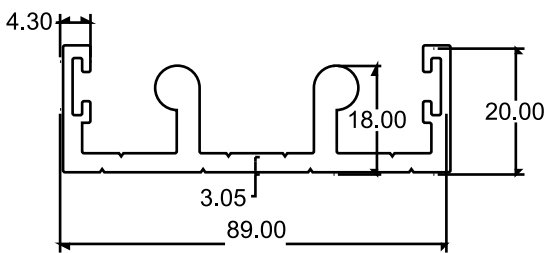
9746

(3.900-4.200) Kg/12'



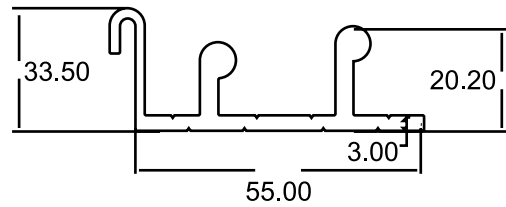
9751

(3.900-4.200) Kg/12'



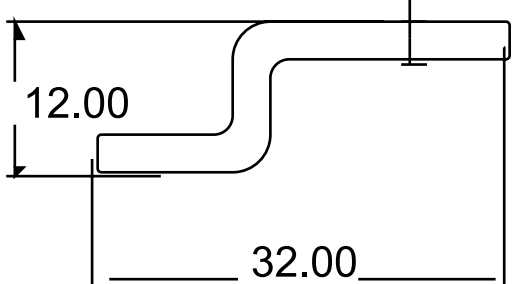
9756

(3.200-3.500) Kg/12'



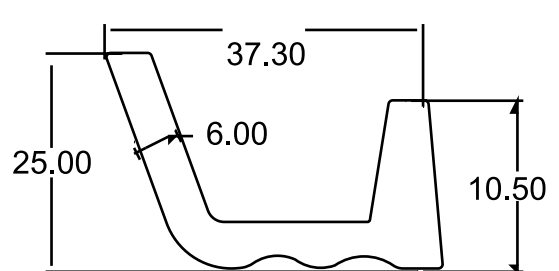
9761

(1.100-1.300) Kg/12'

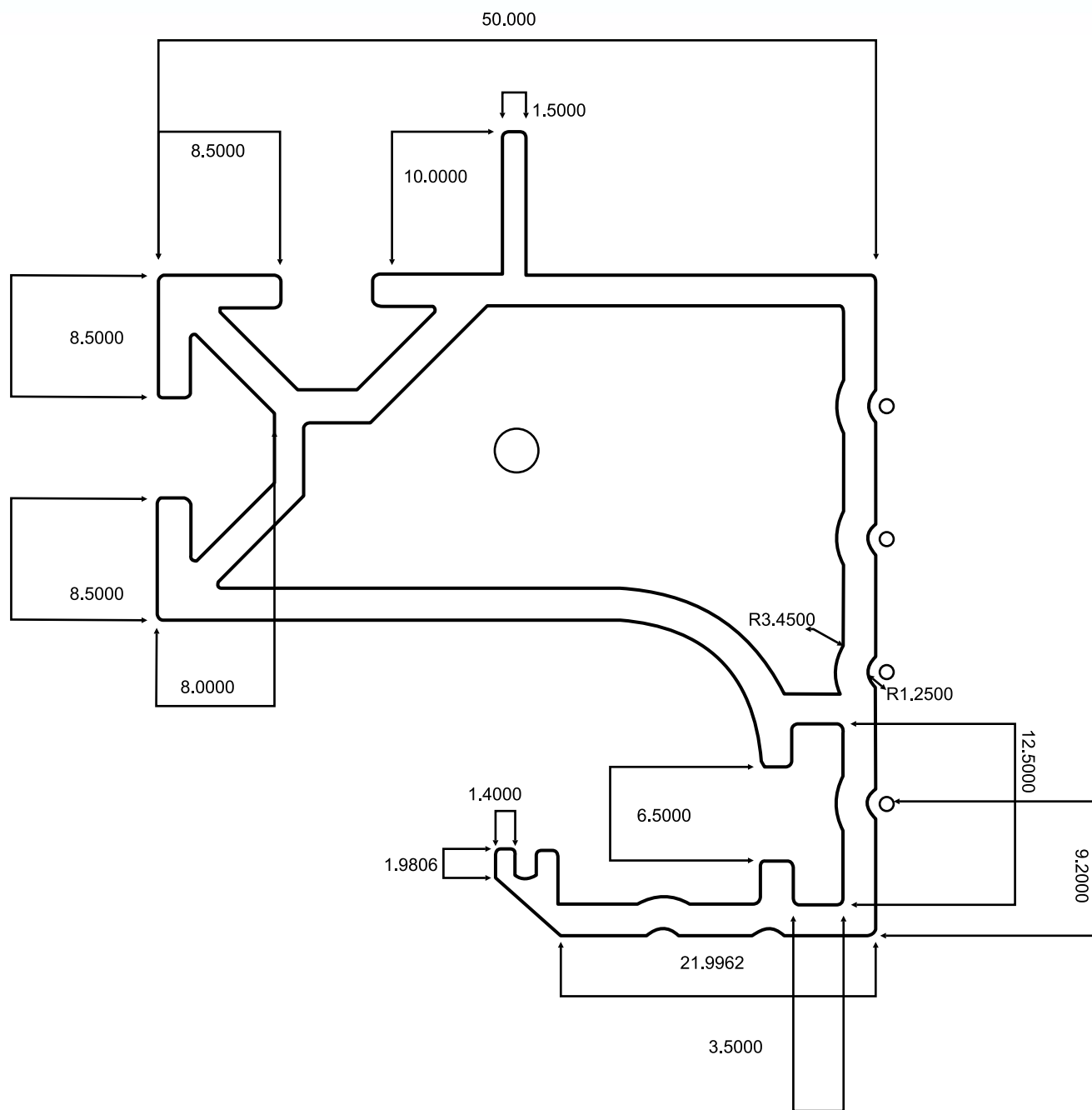


9766

(3.250-3.550) Kg/12'



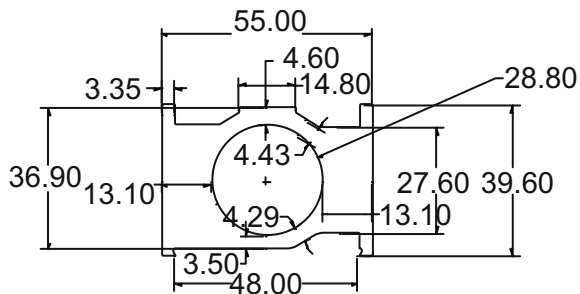
RCF 9700



DOOR CLOSER

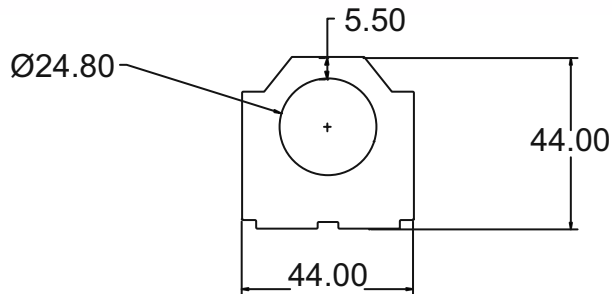
9131

(11.600-12.300) Kg/12'



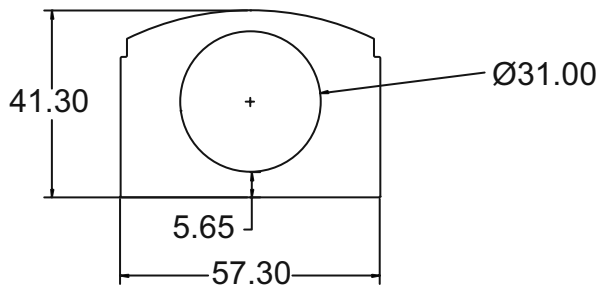
9132

(12.300-13.000) Kg/12'



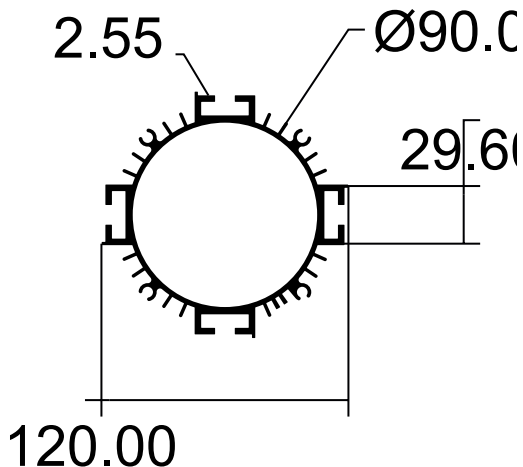
9133

(14.300-15.300) Kg/12'



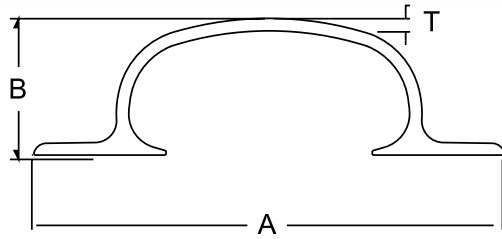
9710

(17.000-18.000) Kg/12'



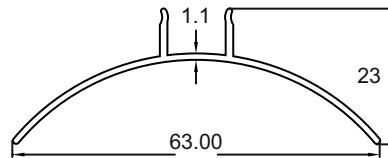
MOTER BODY

C-HANDLE

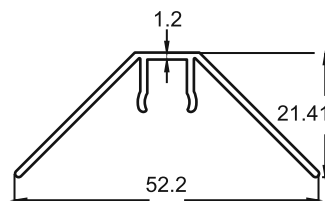


SL.	SEC.NO.	A	B	T	KG/MTR	12'WT.RANGE
1	9265	128	37	3.40	1.800	6.500 - 6.700
2	9266	142	36	3.10	1.720	6.300 - 6.500

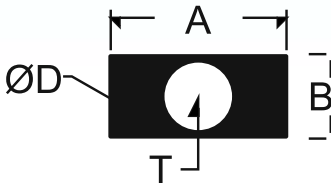
9686
Wt = 0.900-1.100Kg/12'



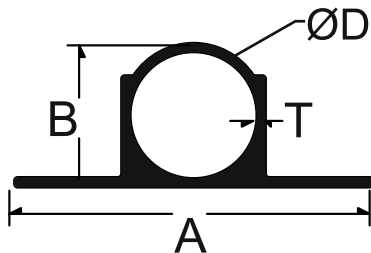
9687
Wt = 1.000-1.200Kg/12'



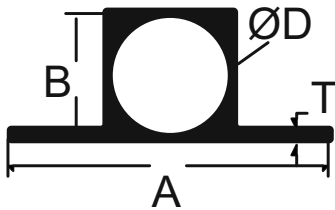
TOWER BOLT



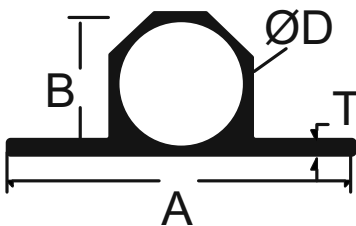
SEC.NO	A	B	T	D	APX. WT. KG/M	WT.RANGE IN 12'
9251	24.5	11.5	1.15	9.20	0.58	1.800-2.000



SEC.NO	A	B	T	D	APX. WT. KG/M	WT.RANGE IN 12'
9250	38.00	17.00	2.40	12.80	0.500	1.800 - 1.850
9252	31.00	12.50	0.90	10.70	0.184	0.650 - 0.800
9253	31.20	12.70	1.20	10.90	0.203	0.700 - 0.850
9258	38.00	16.50	1.85	12.80	0.426	1.500 - 1.700
9263	35.50	14.70	1.70	12.30	0.303	1.100 - 1.050
9264	35.50	14.50	1.50	12.50	0.270	0.980 - 1.050
9267	29.00	11.00	0.80	09.80	0.131	0.470 - 0.500
9268	31.00	11.80	1.00	10.50	0.161	0.580 - 0.620

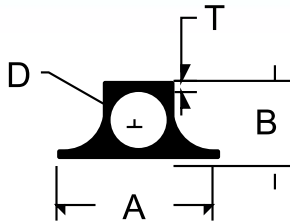


SEC.NO	A	B	T	D	APX. WT. KG/M	WT.RANGE IN 12'
9254	31.00	12.70	1.20	11.00	0.237	0.850 - 1.000
9257	37.00	15.00	2.00	12.00	0.427	1.500 - 1.700

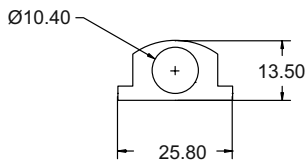


SEC.NO	A	B	T	D	APX. WT. KG/M	WT.RANGE IN 12'
9255	32.00	13.10	1.30	10.80	0.238	0.850 - 0.920
9256	31.70	13.00	1.20	10.70	0.234	0.850 - 0.900

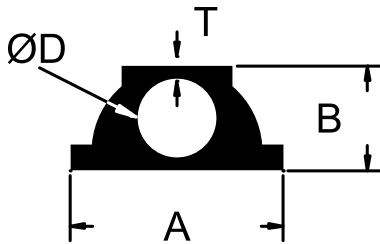
TOWER BOLT



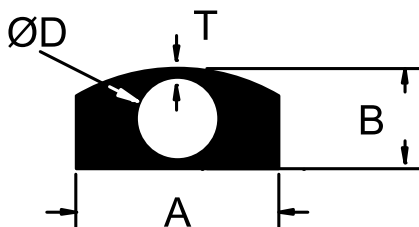
SEC.NO	A	B	T	D	APX. WT. KG/M	WT.RANGE IN 12'
9259	25.00	12.00	1.50	9.00	0.298	1.000 - 1.150



SEC.NO	A	B	T	D	APX. WT. KG/M	WT.RANGE IN 12'
9260	25.80	13.50	3.50	10.40	0.473	1.700 - 1.900



SEC.NO	A	B	T	D	APX. WT. KG/M	WT.RANGE IN 12'
9261	26.50	13.00	3.20	9.80	0.480	1.700-1.900

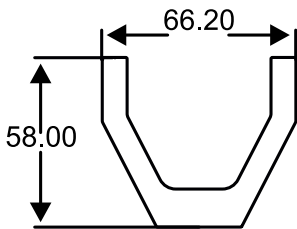


SEC.NO	A	B	T	D	APX. WT. KG/M	WT.RANGE IN 12'
9262	25.00	12.40	1.30	9.80	0.558	2.000-2.200

MISCELLANEOUS ITEMS

9316

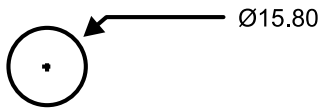
12.700 KG / 12'



ROUND ROD

9275

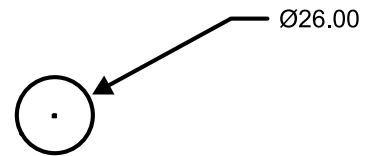
1.900 KG / 12'



ROUND ROD

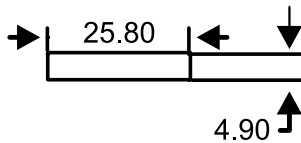
9276

5.300 KG / 12'



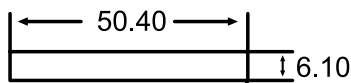
9842

1.300 KG / 12'



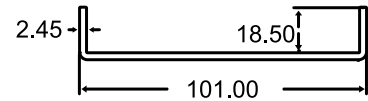
9841

3.000 KG / 12'



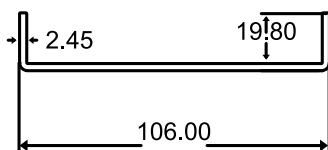
9347

3.200 KG / 12'



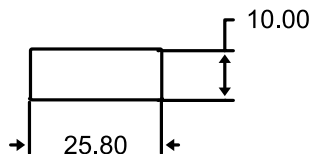
9346

3.360 KG / 12'



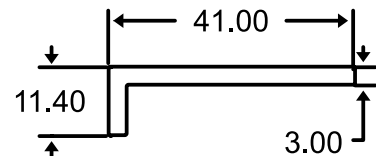
9843

2.500 KG / 12'



9308

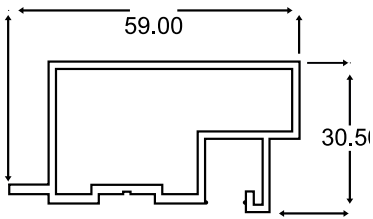
1.500 KG / 12'



MISCELLANEOUS ITEMS

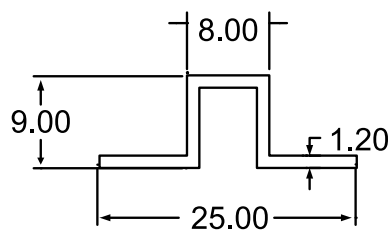
9141

2.900 - 3.200 KG / 12'



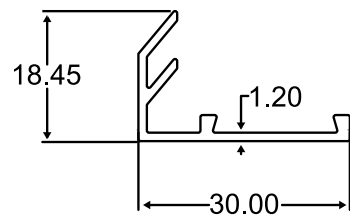
9146

0.480 - 0.530 KG / 12'



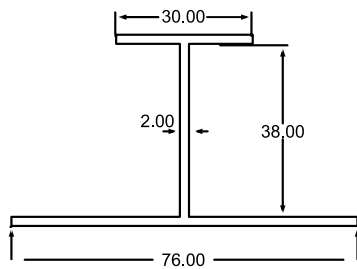
9151

0.750 - 0.800 KG / 12'



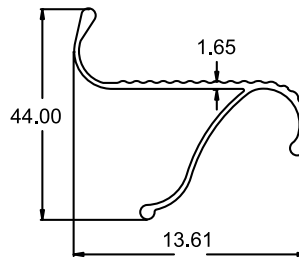
9161

2.850 - 3.000 KG / 12'



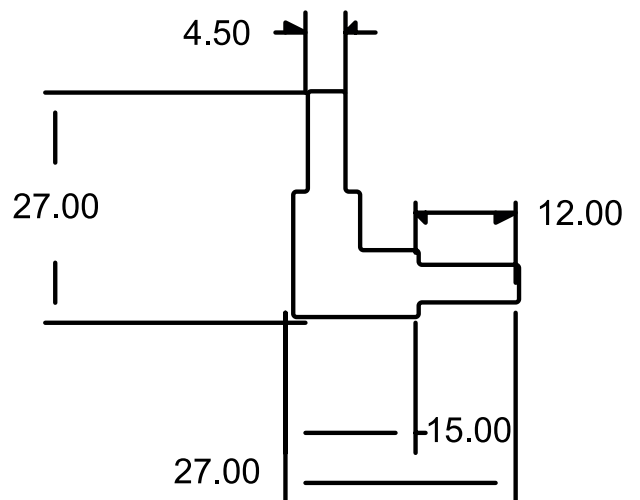
9156

0.650 - 0.700 KG / 5.5'



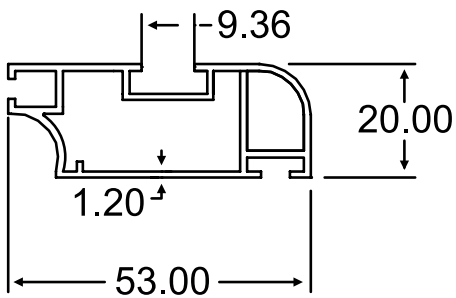
9307

(2.800-3.100) Kg/12'



9725

2.200-2.500 Kg/12'



INDEX

Particular of Section	Section Series	Page Range
Flats	9801-9840	6
Partitions	9001-9130	07-10
Glazing Clips & Plates	9401-9415	12
Structures / Curtain Wall	9501-9520	13-15
Sliding Sections	9601-9620	16-18
Window Sections	9621-9660	19-21
Pattam	9531-9540	22-23
Casement Window	9551-9560	24
Chinese Casement Window	9571-9580	25
Loover & Samosa & Photoframe	9590-9600	26
Foot rest & Handle Sections	9720 , 9640 , 9644	27
Doom Section	9671-9680	28
Round Tube	9901-9920	29
U-Channel Angles & Tee	9301-9340	30
Tubes & Squares	9201-9220	31
Ladder & Stair Profile	9681-9690	32
Kitchen Profiles	9691-9700	33-34
Expansion, Garden, C- channels	9685 , 9318 , 9338	35
RCF Mix	9731-9766	36
RCF	9700	37
Door Closers & Motor Body	9131-9133 , 9710	38
C-Handle	9265 , 9266	39
Tower Bolts	9251-9260	40-41
Miscellaneous Items		42-43